

Radware EMEA Training

**Directions, Hotel, Eateries &
Transportation**

Version 8.0



Contents

1	OVERVIEW	3
2	PRE-REQUISITES	3
3	CLASS HOURS & BREAKS	3
4	EMEA TRAINING CENTER MUNICH (GERMANY)	4
4.1	ADDRESS	4
4.2	LOCATION MAP	6
4.3	DIRECTIONS.....	6
4.3.1	From Munich city to Radware by train	6
4.3.2	To Radware Munich by car	6
4.4	HOTEL RECOMMENDATIONS	7
4.5	EATERIES AT AIRPORT CAMPUS	7
4.6	ATTRACTIONS	8

1 Overview

This document will provide information to familiarize you with Radware training facility in Munich Germany.

If you need further information not covered in this document, please contact:
training@radware.com.

2 Pre-requisites

The courses are intended for technical personnel responsible for the design, implementation, and support of Radware-based APSolute Application Delivery Solutions. Familiarity with IP networking, DNS, HTTP, and other internetworking concepts is recommended.

All attendees are required to bring their own laptop. You need to have an HTTP/HTTPS browser, clients for Telnet, SSH and VNC installed or having the allowance to install it while in training.

3 Class Hours & Breaks

Unless otherwise indicated by your trainer, training is scheduled local time between 9:00am and 5:00pm with a morning and optional afternoon break. A one-hour lunch is allotted daily. Lunch will be included.

At the Instructor's discretion, class hours may differ on the final day of class, depending on number and previous knowledge of students.

4 EMEA Training Center Munich (Germany)

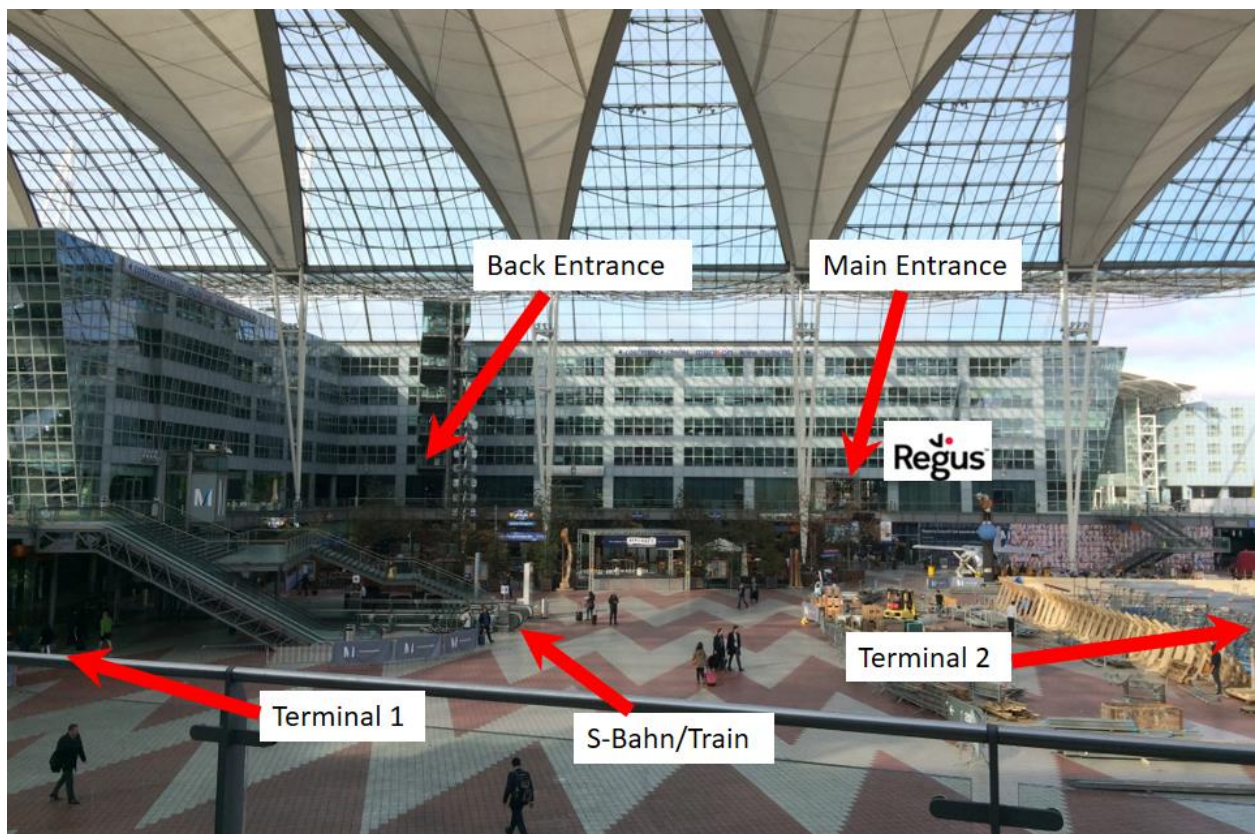
4.1 Address

The EMEA Training Centre is located at Munich Airport close the beautiful city of Munich (München) in Germany. For site-seeing information, please visit the homepage of the city of Munich for more details at: [Munich tourism information](#)

This is the address of the training:

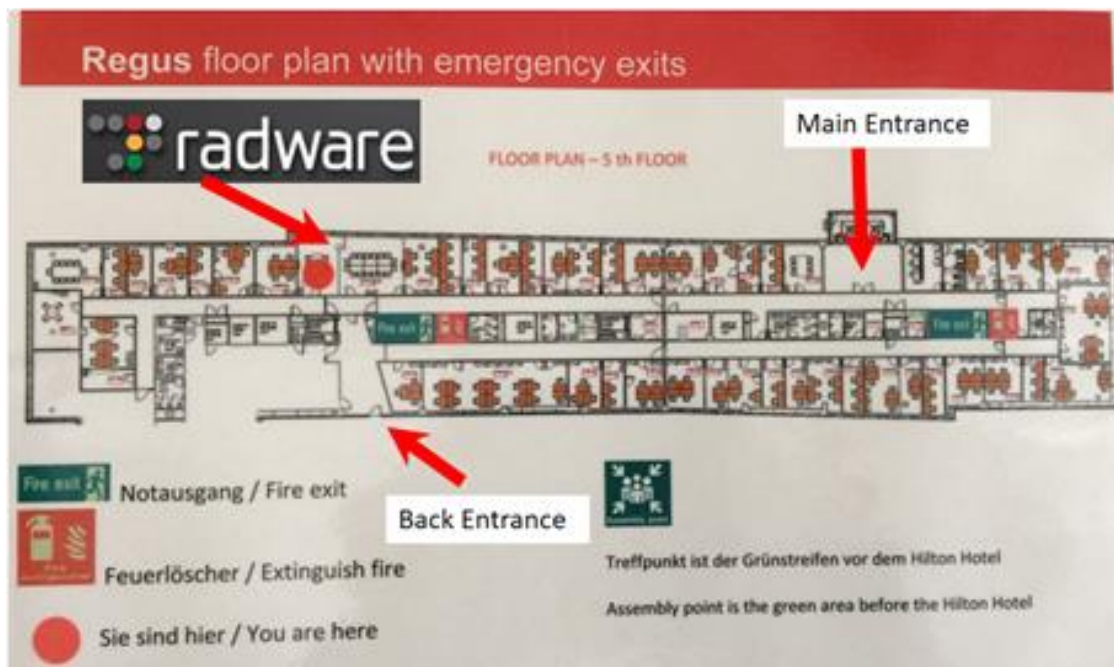
[Radware GmbH](#), Terminalstrasse Mitte 18, 85356 Munich / München, Germany

The office is located at **Regus** office space between Terminal 1 and 2 on the 5th floor.





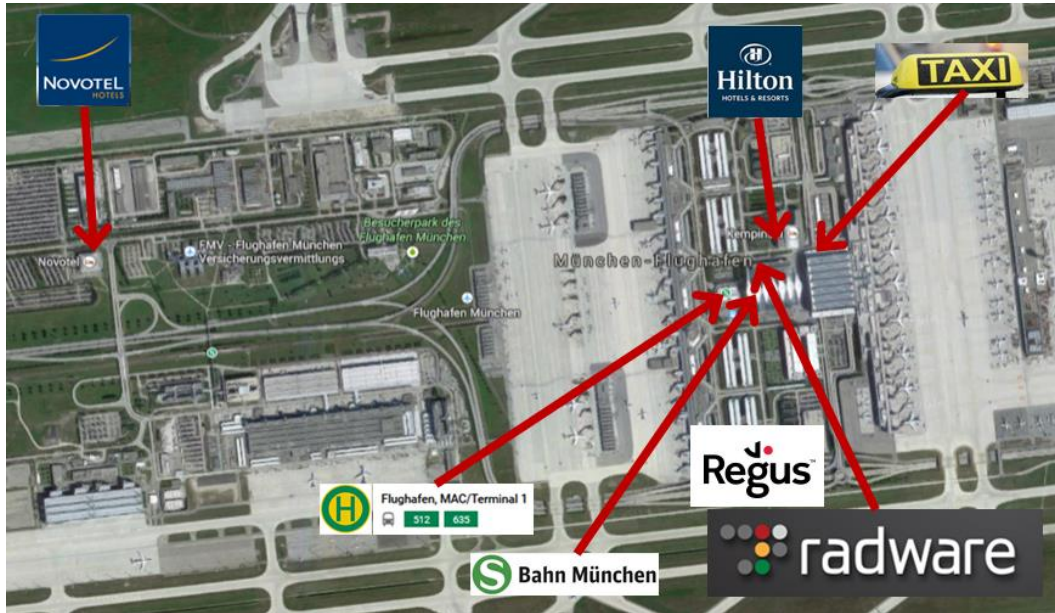
The Regus office opens at **8:30 am**, if you arrive earlier the lobby at the main entrance via elevator is open before.



The trainings usually are taking place at the **room number 64**.


In case the trainer is not yet in, you can ask the Regus personal to open the room for you.

4.2 Location Map



4.3 Directions

4.3.1 From Munich city to Radware by train

- Use the “S-Bahn”  Both lines 1 and 8 terminate at the Airport. For line 1 at station, Neufahrn the train splits. Top part is for service to Freising and tail part is for service to the Airport.
- These are possible ticket's: (prices based on **March 2018**)
 - Single Ticket (4 zones) 11,60 €
 - Single Day-Ticket (Gesamtnetz = entire network) 13,00 €
 - Partner Day-Ticket (entire network, up to 5 people) 24.30 €
 - for more information about time tables and prices visit link: [Munich public transport information](#)

4.3.2 To Radware Munich by car

- Arriving on the **A9** motorway from north or south leave at junction - **Autobahnkreuz Neufahrn**.
- Leave **A9 to A92** direction to the **Airport Munich**, Landshut or Deggendorf.
- After 15 km **leave A92 at exit 6**, Dreieck Flughafen München Franz-Josef-Strauß.
- Choose one of the **parking** spaces at the center, e.g. P26. Prices are different. See info from MUC Airport below.
- You will find **Radware at Regus Office Space on the 2nd floor**
See also [Munich Airport information](#).

4.4 Hotel Recommendations

Please book the hotel directly. If you need help, contact training@radware.com.

Hilton Munich Airport Terminalstrasse Mitte 20, 85356 Munich, Germany TEL: +49 (0) 89 97820

Direct on the airport, two minutes walking from Hotel to our new office.

Novotel Nordallee 29, 85356 Munich, Germany Tel +49 (0) 89 9705130

Close to airport, Taxi or public transport; S-Bahn one stop at Besucherpark or public bus line 512 or 635 stop at Parkplatz P41/Novotel

Holiday Inn Express MUNICH AIRPORT Freisinger Strasse 94, 85445, Oberding – Schwaig Germany

Shuttle-Service to airport available

Arcadia Hotel München Airport Freisinger Str. 77, 85445 Oberding, Germany

Sheraton München Airport Freisinger Str. 80, 85445 Oberding, Germany

Shuttle-Service to airport available

Hotel Victory, Thermenallee 1 85435 Erding, Germany

Distance to airport is 17 km, direct located beside Therme Erding. Tel +49 (0) 8122 - 550 – 3000

4.5 Eateries at Airport campus

Airbräu, Bavarian und international cuisine.

il Mondo, Italian and mediterian cuisine

Käfer Bistro, Bavarian und international cuisine.

Bamee, Tai, Chinese and Indian cuisine

Alfredo Bar, Bavarian und Italian cuisine.

Casino Fracht and Casino Subzentrum, fresh made lunch food.

McDonald's, fast food.

4.6 Attractions

Therme Erding, is the largest thermal bath complex in Europe at 145,000 square meters (36 acres). It has different areas for swimming, dressed and nude spa and sauna and 26 playgroude slides with 2.5 km (1.6 miles) in length. It is close to Munich airport. By taxi 20 min and is visited by around 4000 people every day.

Erding is a town and capital of the district Erding. It is famous for the original Erdinger Weissbier and Grünbacher beer. There are also a lot of different restaurants and the city has a nice down town.

Freising is a town and capital of the Freising district. The city is located near the Munich International Airport. Anyone taking off or landing at Munich airport can see the city to the north with the prominent cathedral hill, the bishop's castle and the Freising cathedral. Weihenstephan is also famous for his excellent beer and is the oldest working beer brewery in the world.

Munich is close, 35 km, and best reachable by public transport (S-Bahn) or taxi.

North America
Radware Inc.
575 Corporate Drive
Mahwah, NJ 07430
Tel: +1-888-234-5763

International
Radware Ltd.
22 Raoul Wallenberg St.
Tel Aviv 69710, Israel
Tel: 972 3 766 8666