



Radware vDirect Plug-In Quick Install Guide

Software Version 1.0

Document ID: RDWR-vDIR-V1000_QS0111

January, 2011

Important Notices

The following important notices are presented in English, French, and German.

Important Notices

This guide is delivered subject to the following conditions and restrictions:

Copyright Radware Ltd. 2006–2010. All rights reserved.

The copyright and all other intellectual property rights and trade secrets included in this guide are owned by Radware Ltd.

The guide is provided to Radware customers for the sole purpose of obtaining information with respect to the installation and use of the Radware products described in this document, and may not be used for any other purpose.

The information contained in this guide is proprietary to Radware and must be kept in strict confidence.

It is strictly forbidden to copy, duplicate, reproduce or disclose this guide or any part thereof without the prior written consent of Radware.

Notice importante

Ce guide est sujet aux conditions et restrictions suivantes : Copyright Radware Ltd. 2006–2010. Tous droits réservés.

Le copyright ainsi que tout autre droit lié à la propriété intellectuelle et aux secrets industriels contenus dans ce guide sont la propriété de Radware Ltd.

Ce guide d'informations est fourni à nos clients dans le cadre de l'installation et de l'usage des produits de Radware décrits dans ce document et ne pourra être utilisé dans un but autre que celui pour lequel il a été conçu.

Les informations répertoriées dans ce document restent la propriété de Radware et doivent être conservées de manière confidentielle.

Il est strictement interdit de copier, reproduire ou divulguer des informations contenues dans ce manuel sans avoir obtenu le consentement préalable écrit de Radware.

Wichtige Anmerkung

Dieses Handbuch wird vorbehaltlich folgender Bedingungen und Einschränkungen ausgeliefert: Copyright Radware Ltd. 2006–2010. Alle Rechte vorbehalten.

Das Urheberrecht und alle anderen in diesem Handbuch enthaltenen Eigentumsrechte und Geschäftsgeheimnisse sind Eigentum von Radware Ltd.

Dieses Handbuch wird Kunden von Radware mit dem ausschließlichen Zweck ausgehändigt, Informationen zu Montage und Benutzung der in diesem Dokument beschriebene Produkte von Radware bereitzustellen. Es darf für keinen anderen Zweck verwendet werden.

Die in diesem Handbuch enthaltenen Informationen sind Eigentum von Radware und müssen streng vertraulich behandelt werden.

Es ist streng verboten, dieses Handbuch oder Teile daraus ohne vorherige schriftliche Zustimmung von Radware zu kopieren, vervielfältigen, reproduzieren oder offen zu legen.

Copyright Notices

The following copyright notices are presented in English, French, and German.

Copyright Notices

This product contains code developed by the OpenSSL Project

This product includes software developed by the OpenSSL Project. For use in the OpenSSL Toolkit. (<http://www.openssl.org/>).

Copyright (c) 1998-2005 The OpenSSL Project. All rights reserved.

This product contains the Rijndael cipher

The Rijndael implementation by Vincent Rijmen, Antoon Bosselaers and Paulo Barreto is in the public domain and distributed with the following license:

@version 3.0 (December 2000)

Optimized ANSI C code for the Rijndael cipher (now AES)

@author Vincent Rijmen <vincent.rijmen@esat.kuleuven.ac.be>

@author Antoon Bosselaers <antoon.bosselaers@esat.kuleuven.ac.be>

@author Paulo Barreto <paulo.barreto@terra.com.br>

The OnDemand Switch may use software components licensed under the GNU General Public License Agreement Version 2 (GPL v.2) including LinuxBios and Filo open source projects. The source code of the LinuxBios and Filo is available from Radware upon request. A copy of the license can be viewed at:

<http://www.gnu.org/licenses/old-licenses/gpl-2.0.html>

This code is hereby placed in the public domain.

This product contains code developed by the OpenBSD Project

Copyright (c) 1983, 1990, 1992, 1993, 1995

The Regents of the University of California. All rights reserved.

Redistribution and use in source and binary forms, with or without modification, are permitted provided that the following conditions are met:

1. Redistributions of source code must retain the above copyright notice, this list of conditions and the following disclaimer.
2. Redistributions in binary form must reproduce the above copyright notice, this list of conditions and the following disclaimer in the documentation and/or other materials provided with the distribution.
3. Neither the name of the University nor the names of its contributors may be used to endorse or promote products derived from this software without specific prior written permission.

This product includes software developed by Markus Friedl

This product includes software developed by Theo de Raadt

This product includes software developed by Niels Provos

This product includes software developed by Dug Song

This product includes software developed by Aaron Campbell

This product includes software developed by Damien Miller

This product includes software developed by Kevin Steves

This product includes software developed by Daniel Kouril

This product includes software developed by Wesley Griffin

This product includes software developed by Per Allansson

This product includes software developed by Nils Nordman

This product includes software developed by Simon Wilkinson

Redistribution and use in source and binary forms, with or without modification, are permitted provided that the following conditions are met:

1. Redistributions of source code must retain the above copyright notice, this list of conditions and the following disclaimer.
2. Redistributions in binary form must reproduce the above copyright notice, this list of conditions and the following disclaimer in the documentation and/or other materials provided with the distribution.

ALL THE SOFTWARE MENTIONED ABOVE IS PROVIDED BY THE AUTHOR "AS IS" AND ANY EXPRESS OR IMPLIED WARRANTIES, INCLUDING, BUT NOT LIMITED TO, THE IMPLIED WARRANTIES OF MERCHANTABILITY AND FITNESS FOR A PARTICULAR PURPOSE ARE DISCLAIMED.

IN NO EVENT SHALL THE AUTHOR BE LIABLE FOR ANY DIRECT, INDIRECT, INCIDENTAL, SPECIAL, EXEMPLARY, OR CONSEQUENTIAL DAMAGES (INCLUDING, BUT NOT LIMITED TO, PROCUREMENT OF SUBSTITUTE GOODS OR SERVICES; LOSS OF USE, DATA, OR PROFITS; OR BUSINESS INTERRUPTION) HOWEVER CAUSED AND ON ANY THEORY OF LIABILITY, WHETHER IN CONTRACT, STRICT LIABILITY, OR TORT (INCLUDING NEGLIGENCE OR OTHERWISE) ARISING IN ANY WAY OUT OF THE USE OF THIS SOFTWARE, EVEN IF ADVISED OF THE POSSIBILITY OF SUCH DAMAGE.

Radware End User License Agreement

READ THE TERMS AND CONDITIONS OF THIS LICENSE AGREEMENT CAREFULLY BEFORE OPENING THE PACKAGE CONTAINING THE PRODUCT, THE COMPUTER SOFTWARE THEREIN (THE "SOFTWARE"), AND THE ACCOMPANYING USER DOCUMENTATION (THE "DOCUMENTATION") (COLLECTIVELY: THE "PRODUCT"). THE SOFTWARE INCLUDED IN THE PRODUCT IS COPYRIGHTED AND LICENSED (NOT SOLD). BY OPENING THE PACKAGE CONTAINING THE PRODUCT, YOU ARE ACCEPTING AND AGREEING TO THE TERMS OF THIS LICENSE AGREEMENT. IF YOU ARE NOT WILLING TO BE BOUND BY THE TERMS OF THIS LICENSE AGREEMENT, YOU SHOULD PROMPTLY RETURN THE PACKAGE IN UNOPENED FORM. THIS LICENSE AGREEMENT REPRESENTS THE ENTIRE AGREEMENT CONCERNING THE PRODUCT BETWEEN YOU AND RADWARE LTD. ("RADWARE"), AND SUPERSEDES ANY PRIOR PROPOSAL, REPRESENTATION, OR UNDERSTANDING BETWEEN THE PARTIES.

1. **License Grant.** Radware hereby grants to you, and you accept, a nonexclusive, nontransferable license to install and use the Product, including the Software contained therein in machine-readable, object code form only, and including the Documentation. You agree that you will not assign, sublicense, transfer, pledge, lease, rent or share your rights under this License Agreement. You agree that you may not reverse engineer, reverse assemble or reverse compile the Product.
2. **No Copying and Reverse Engineering.** You agree that you will not: (a) copy, modify, create any derivative work of, or include in any other products any of, the Products, including the underlying Software or any portion thereof; or (b) reverse assemble, decompile, reverse engineer or otherwise attempt to derive source code (or the underlying ideas, algorithms, structure or organization) from the Product; or (c) remove any copyright notices, identification or any other proprietary notices from the Product.
3. **Intellectual Property Rights.** You acknowledge and agree that this License Agreement does not convey to you an interest in the Software and Documentation, but only the limited right to use them as part of the Product, and that all right, title, and interest in and to the Software and Documentation, including associated intellectual property rights, are and shall remain with Radware. You further acknowledge and agree that the Software and Documentation are proprietary products of Radware and its licensors protected under international copyright law.
4. **Warranty.** Radware warrants to you that the hardware in the Product shall be free of defects in material and workmanship under normal use and service for a period of twelve (12) months following the date of shipment ("Warranty Period"). During the Warranty Period, Radware will, at its option, replace or repair products that prove to be defective, in accordance with Radware RMA Policy, as amended from time to time.

Radware shall be released from all obligations under its warranty in the event that the Product has been subjected to misuse, neglect, accident or improper installation, or if repairs or modifications were made by persons other than Radware own authorized service personnel, unless such repairs by others were made with the written consent of Radware.

The Software included in the Product is provided "as is" and without warranty of any kind. However, during the Warranty Period, Radware will provide software releases with corrective code – maintenance releases - at no extra charge. All corrective hardware upgrades during the Warranty Period are also included.

THE ABOVE WARRANTIES ARE IN LIEU OF ALL OTHER WARRANTIES. RADWARE DISCLAIMS ANY AND ALL OTHER WARRANTIES, WHETHER EXPRESS OR IMPLIED, INCLUDING, WITHOUT LIMITATION, ANY IMPLIED WARRANTIES OF MERCHANTABILITY OR FITNESS FOR A PARTICULAR PURPOSE.

5. Purchase of Additional Warranty. Radware offers an extended hardware and software warranty agreement to cover products during and after the Warranty Period, packaged as part of the Certainty Support Program, available through Radware's authorized resellers.
6. Limitation of Liability. Radware's cumulative liability to you or any other party for any loss or damages resulting from any claims, demands, or actions arising out of or relating to this License Agreement shall not exceed the purchase price of the Product. In no event shall Radware be liable for any indirect, incidental, consequential, special, or exemplary damages or lost profits, even if Radware has been advised of the possibility of such damages. SOME STATES DO NOT ALLOW THE LIMITATION OR EXCLUSION OF LIABILITY FOR INCIDENTAL OR CONSEQUENTIAL DAMAGES, SO THE ABOVE LIMITATION OR EXCLUSION MAY NOT APPLY TO YOU.
7. Third Party Rights. The PROGRAM includes software portions developed and owned by third parties (the "Third Party Software"). Third Party licensors and suppliers retain all right, title and interest in Third Party Software and all copies thereof, including all copyright and other intellectual property. YOU agree and undertake not to (a) copy the PROGRAM or any Third Party Software onto any public or distributed network; (b) use any Third Party Software to operate in or as a time-sharing, outsourcing, service bureau, application service provider, or managed service provider environment; (c) use the Third Party Software as a general SQL server, as a stand alone application or with applications other than the Radware Devices under this License; (d) change any proprietary notices which appear in the Third Party Software; or (e) modify the Third Party Software. Copies of the Third Party Software may be made solely for backup and archival purposes.
8. Term and Termination. This Agreement is effective upon your Purchasing, installing or using the Product or any portion thereof, and shall continue until terminated. However, sections 2, 3 and 6-10 shall survive termination of this Agreement. The License under this Agreement is not transferable and will terminate upon transfer of the Radware Device/s.
9. Export. The Product or any part thereof may be subject to export or import controls under the laws and regulations of the United States and/or Israel. You agree to comply with such laws and regulations, and, agree not to knowingly export, re-export, import or re-import, or transfer products without first obtaining all required Government authorizations or licenses.
10. Governing Law. This License Agreement shall be construed and governed in accordance with the laws of the State of Israel.
11. Miscellaneous. If a judicial determination is made that any of the provisions contained in this Agreement constitute an unreasonable or otherwise unenforceable restriction against either party, such provision or provisions shall be rendered void or invalid only to the extent that such judicial determination finds such provisions to be unreasonable or otherwise unenforceable, and the remainder of this Agreement shall remain operative and in full force and effect. In any event the a party breaches or threatens to commit a breach of this Agreement, the other party will, in addition to any other remedies available to, be entitle to injunction relief. This Agreement constitutes the entire agreement between the parties hereto and supersedes all prior agreements between the parties hereto with respect to the subject matter hereof. The failure of any party hereto to require the performance of any provisions of this Agreement shall in no

manner affect the right to enforce the same. No waiver by any party hereto of any provisions or of any breach of any provisions of this Agreement shall be deemed or construed either as a further or continuing waiver of any such provisions or breach waiver or as a waiver of any other provision or breach of any other provision of this Agreement.

COPYRIGHT © 2010, Radware Ltd. All Rights Reserved.

Document Conventions

The following describes the conventions and symbols that this guide uses:







| Item | Description | Description (French) | Beschreibung (German) |
|--|---|--|--|
|  Example | An example scenario | Un scénario d'exemple | Ein Beispielszenarium |
|  Caution: | Possible damage to equipment, software, or data | Endommagement possible de l'équipement, des données ou du logiciel | Mögliche Schäden an Gerät, Software oder Daten |
|  Note: | Additional information | Informations complémentaires | Zusätzliche Informationen |
|  To | A statement and instructions | Références et instructions | Eine Erklärung und Anweisungen |
|  Tip: | A suggestion or workaround | Une suggestion ou solution | Ein Vorschlag oder eine Umgehung |
|  Warning: | Possible physical harm to the operator | Blessure possible de l'opérateur | Verletzungsgefahr des Bedieners |

Table of Contents

| | |
|--|-----------|
| Important Notices | 3 |
| Copyright Notices | 4 |
| Radware End User License Agreement | 5 |
| Document Conventions | 7 |
| Chapter 1 – Preface..... | 11 |
| Who Should Use This Book | 11 |
| Related Documentation | 11 |
| Introduction | 11 |
| Prerequisites | 12 |
| Key Terms | 12 |
| Chapter 2 – Installation and Configuration..... | 15 |
| vDirect Plug-in Installation | 15 |
| Initial Configuration | 16 |
| Restarting the Service | 18 |

Chapter 1 – Preface

This guide describes the installation process and initial configuration of the vDirect Plug-in.

Who Should Use This Book

This guide is intended for virtual datacenter managers using the *VMware vCenter Orchestrator* working with automated services. It assumes that you are familiar with the VMware vCenter environment.

Related Documentation

The following documentation is related to the vDirect Plug-in:

- *vDirect Plug-in User Guide*
- *vDirect Plug-in Release Notes*
- *Alteon VA Quick Install Guide*
- *Alteon Application Switch Operating System Command Reference 26.x or later*
- *Alteon Application Switch Operating System Application Guide 26.x or later*
- *SDK Installation Guide*

Introduction

Radware's vDirect Plug-in is a Radware ADC plug-in for the VMware vCenter Orchestrator. It is designed to both offer out-of-the-box tools to create and manage Virtual Data Center Services, while providing the tools to easily develop new services based on the specific needs of the organization. vDirect is a central component of the Radware VADI architecture, containing all the components for an Orchestration System to provision, decommission, configure and monitor vADCs and computing resources within a virtual data center.

vDirect Plug-in is fully integrated with the VMware vCenter and vCenter Orchestrator systems and provides automation and management benefits for VMware's virtualization infrastructure. Using the virtualization infrastructure, SMB customers can automate basic operations, such as on-demand virtual machine (VM) resources allocation through large enterprises and up to cloud services providers. vDirect Plug-in offers a complete set of out-of-the-box workflows to transparently integrate with the Radware product line and automatically create services of multiple layers, network and storage.

vDirect Plug-in allows for automatic alignment of the infrastructure changes and automatic adaptation by provisioning/decommissioning of vADC instances as part of end-to-end service creation and automatically adding/removing computing resources to hosted applications. vDirect Plug-in integrates and monitors availability and performance based Key Performance Indicators (KPIs) with the cloud orchestration.

Prerequisites

To work with the vDirect Plug-in, you must have a fully functioning VMware vSphere Orchestrator (VCO) versions vSphere 4.0.x or 4.1.

Key Terms

The following is a list of commonly used terms in the vDirect Plug-in environment:

| Term | Description |
|-------------------------|---|
| Action | A single operation applied on a single device. vDirect offers a library of pre-defined out-of-the-box operations for creating ADC instances, new services, collecting information, such as the name of objects, and more. |
| Workflow | <p>The Workflow engine allows users to create business processes. The workflow engine uses the vDirect Plug-in to create an automated process that can be executed on demand by the administrator against any of the Radware ADC solutions. vDirect offers a number of out-of-the-box workflows for immediate service creation.</p> <p>Once the vDirect Plug-in is installed on the VMware's VCO system, a new library named <i>VADI</i> becomes available under <i>Radware vDirect</i>. The VADI workflow library contains all the pre-defined Radware workflows available for the integration of Radware products into datacenter services.</p> |
| Container | <p>An object that represents Radware solution form factors and defines the access method (address, protocol, credentials and, in some cases, location). vDirect supports three types of containers:</p> <ul style="list-style-type: none">• Dedicated ADC• ADC-VX• ADC-VA <p>Containers serve as objects through which the individual ADCs are registered for service.</p> |
| Dedicated ADC container | A Dedicated ADC is a container representing any Alteon system running a software version supported by the vDirect plug-in, allowing the system remote management access. |
| ADC-VX container | <p>ADC-VX is a container representing Radware's ADC virtualization solution for virtual ADC. The ADC-VX container allows vDirect to create virtual ADC instances called vADC.</p> <p>For more information regarding ADC-VX, please refer to: http://www.radware.com/Products/ApplicationDelivery/adcvx.aspx</p> |
| ADC-VA container | <p>Unlike the other containers, the ADC-VA container represents VMware's ESX server. It defines all the elements of the environments required to create, clone and support the ADC Virtual Appliances as part of the VMware Virtual Infrastructure.</p> <p>For more information of ADC-VA, please refer to: http://www.radware.com/Products/ApplicationDelivery/alteon/alteonva.aspx</p> |

| Term | Description |
|----------|---|
| Instance | <p>An object representing the actual ADC form factor on which actions and workflows are applied. While the container serves as the location where the ADC service is created (VMware ESX Server, ADC-VX, or a dedicated appliance), the instance is the ADC that offers the service. There are instances in three different form factors:</p> <ul style="list-style-type: none">• Dedicated ADC application switch• vADC instance running in an ADC-VX system• Alteon Virtual Appliance running on a VMware ESX server <p>Actions that create a server farm or a service supporting an customer/ application are applied on an instance.</p> <p>For additional terms used by VMware, please refer to: http://www.vmware.com/pdf/vco_40_install_config_guide.pdf</p> |
| SDK | For SDK information please refer to the vDirect online help. |
| API | For API information please refer to the vDirect online help. |

Chapter 2 – Installation and Configuration

This chapter contains the installation and configuration instructions for the vDirect Plug-in.

vDirect Plug-in Installation

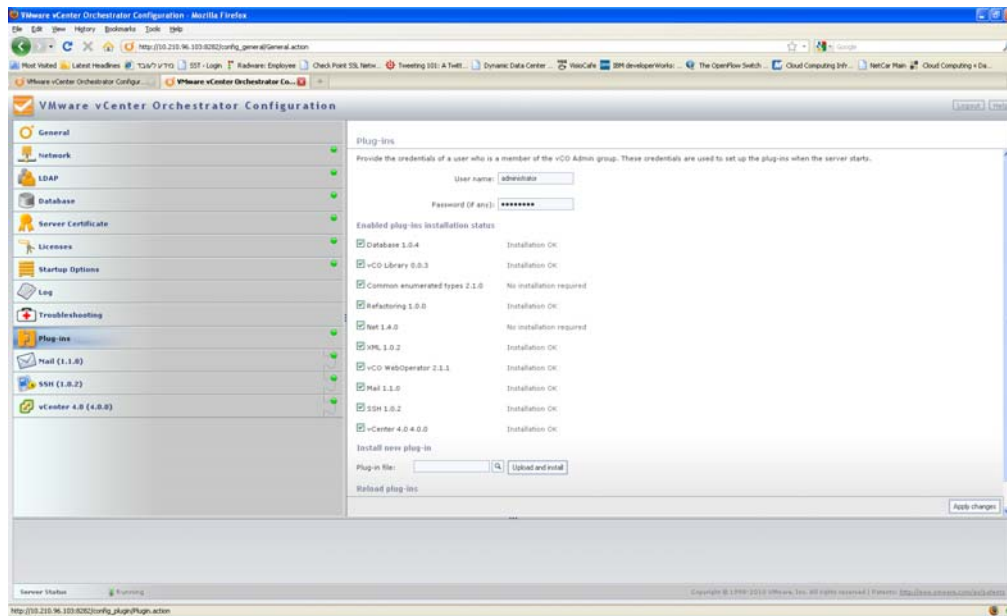
To set up vDirect Plug-in, you must first install the vDirect Plug-in file provided by Radware via the *VMware vCenter Orchestrator Configuration* page.

Installing the vDirect Plug-in



To install the vDirect Plug-in

1. In the Internet Browser, enter http://vco_server:8282, where **vco_server** is the name or IP address where the VCO is installed. The *VMware vCenter Orchestrator Configuration* login page is displayed.
2. Log into the *VMware vCenter Orchestrator Configuration* Web page. The default username and password are *vmware*. The main Web page of the *VMware vCenter Orchestrator Configuration* is displayed:



3. Click **Plug-ins**. The *Plug-ins* configuration page is displayed.
4. In the *Install new plug-in* area, click **Upload and Install** to browse and select the **radware-alteon-vco.dar** plug-in file. The plug-in is displayed in the main menu and in the *Enabled plug-ins installation status* list.

Currently, the status of the vDirect Plug-in is displayed as **Will perform installation at next server startup**.

5. Configure the vDirect Plug-in. For more information, see [Initial Configuration, page 16](#).
6. Restart the service. For more information, see [Restarting the Service, page 18](#).

Initial Configuration

After installing the vDirect Plug-in, you must create and configure a vADC container for each of the form formats in your system via the *VMware vCenter Orchestrator Configuration* Web page. The Radware solution includes three types of ADCs that can be managed via the vDirect Plug-in. The configuration differs depending on the type of form factors.

Configuration Prerequisite

The VMware vCenter Orchestrator Server Web Configuration service *vCOConfiguration* must be running before starting the Web configuration. This service is responsible for the vDirect Plug-in installation and container registration.

Configuring a Dedicated ADC Container



To configure a dedicated ADC

1. Log into the *VMware vCenter Orchestrator Configuration* Web page.
2. Click **vDirect**. The *Container Summary* page is displayed.

Container Summary

Filter: All

| | Name | Type |
|--|------|---------------|
| | d01 | Dedicated ADC |
| | p01 | ADC-VX |
| | s01 | ADC-VA |

3 containers found, displaying all containers.

Delete

New: Select Type
Select Type
Dedicated ADC
ADC-VX
ADC-VA

Copyright © 1998-2010 VMware, Inc. All rights reserved | Patents: <http://www.vmware.com/go/patents>

3. From the *New* drop-down list, select **Dedicated ADC**. The *New Dedicated ADC* configuration page is displayed.

- Set the following parameters:

| Parameter Name | Description |
|-----------------|--|
| Name | The display name of the dedicated ADC container |
| IP Address | The IP address where the dedicated ADC container resides |
| Read community | The read community authorized to access the dedicated ADC |
| Write community | The write community authorized to access the dedicated ADC |

- Click **Apply**.

For more information on managing and working with the vDirect Plug-in, see the vDirect Plug-in *User Guide*.

Configuring an ADC-VX Container



To configure an ADC-VX container

- Log into the *VMware vCenter Orchestrator Configuration Web page*.
- Click **vDirect**. The *Container Summary* page is displayed.
- From the *New* drop-down list, select **ADC-VX**. The *New ADC-VX* configuration page is displayed.
- Set the following parameters:

| Parameter Name | Description |
|-----------------|---|
| Name | The display name of the ADC-VX container |
| IP Address | The IP address where the ADC-VX container resides |
| Read community | The read community authorized to access the ADC-VX |
| Write community | The write community authorized to access the ADC-VX |

- Click **Apply**.

For more information on managing and working with the vDirect Plug-in, see the vDirect Plug-in *User Guide*.

Configuring an ADC-VA Container



To configure an ADC-VA container

- Log into the *VMware vCenter Orchestrator Configuration Web page*.
- Click **vDirect**. The *Container Summary* page is displayed.
- From the *New* drop-down list, select **ADC-VA**. The *New ADC-VA* configuration page is displayed.
- Set the following parameters:

| Parameter Name | Description |
|----------------|--|
| Name | Enter the display name of the ADC-VA container. |
| vCenter | Select the vCenter on which the ADC-VA container is created from the drop-down list. |
| Host | Select the host on which the ADC-VA container is created from the drop-down list. |
| Datastore | Select the data store from the drop-down list. |
| Resource Pool | Select the resource pool from the drop-down list. |

5. Click **Apply**.

For more information on managing and working with the vDirect Plug-in, see the vDirect Plug-in *User Guide*.

Restarting the Service

After configuring the vDirect Plug-in, you must restart the service for the configuration to take effect.



To restart the service

1. Click **Startup Options** on the *VMware vCenter Orchestrator Configuration* Web page. The *Server Startup Options* pane is displayed.
2. Click **Restart Service**.
3. Click **Plug-ins**.
In the *Enabled plug-ins installation status* list, the status of the vDirect Plug-in is displayed as **Installation OK**.