



TESTING & INTEGRATION GROUP
SOLUTION GUIDE

Alteon Application Switch optimizing the delivery of VMware View
5.1

Contents

INTRODUCTION..... 2

 RADWARE ALTEON 2

 VMWARE VIEW 4

RADWARE ALTEON AND VMWARE VIEW SERVER ARCHITECTURE..... 5

IMPORTANT IMPLEMENTATION NOTES..... 6

 CONFIGURATION 7

ALTEON ACTIVE CONFIGURATION..... 7

VMWARE VIEW CONNECTION SERVERS (CONNECTION 1) 12

VMWARE VIEW CONNECTION SERVERS (CONNECTION 2) 12

 VMWARE VIEW CONNECTION SERVERS 13

CONFIGURE VMWARE VIEW CONNECTION GLOBAL SETTINGS 13

APPENDIX - I..... 13

ALTEON ACTIVE DEVICE FULL CONFIGURATION SCRIPT..... 13

ALTEON STANDBY DEVICE FULL CONFIGURATION SCRIPT 19

Introduction

Implementing VMware View in an organization introduces a new set of challenges for IT, pushing its infrastructure to the limit and challenging its current administration policies. VMware View requires that an organization meet SLA commitments and provide QoE assurances. The inability to comply with these requirements will result in user frustration and loss of user productivity.

This guide presents a standardized integration solution in which Radware's load balancing and acceleration product, Alteon, is set up in front of a VMware View environment to ensure its availability and performance in order to meet SLA and QoE requirements.

Radware Alteon

Radware's Alteon ADC solution provides advanced and comprehensive application delivery capabilities needed to effectively meet the challenges of application deployment and application delivery in today's data centers. Equipped with advanced application acceleration capabilities, a global server load balancing solution and a comprehensive Layer 7 modification tool, Alteon ADC is well-positioned as the leading ADC in the industry. Alteon ADC also spearheads the ADC virtualization trend with ADC-VX™, the industry's first ADC virtualization and consolidation platform based on a specialized ADC hypervisor, and Alteon virtual appliance (Alteon VA).

Integrated Application Acceleration Capabilities with FastView™

Radware's Alteon ADC delivers a wide set of advanced application acceleration capabilities, designed to accelerate application response time while offloading server processing. By offloading processor intensive operations, such as SSL, Web compression, caching, HTTP multiplexing, and TCP optimization, it frees the servers' CPUs to handle additional requests, which results in reduced application server hardware and lower CAPEX.

Radware's FastView™ result-driven acceleration technology adds Web Performance Optimization (WPO) capabilities on top of the standard ADC application acceleration features to deliver the fastest Web application response time and ensure best application SLA. The result is best business impact for increased revenues, more page views, higher customer loyalty as well as improved employee productivity when using enterprise Web applications for all browsers and all end-user device types – starting from the first page visit.

Shaped to Deliver Applications

With Radware's AppShape™ technology, Alteon ADC benefits from reduced deployment time of application delivery services by 85%, while guaranteeing maximum value for each business critical application in terms of availability, performance and security. AppShape offers configuration templates and wizards for leading business applications. AppShape allows application delivery services to be fully managed and operated from an application-centric view, including operational screens, logs and compliance – resulting in simplified and efficient application management in the ADC. Furthermore AppShape's reporting capabilities help organizations with capacity planning tasks by providing per application trends analysis and resources utilization reports.

VMware View

VMware View delivers rich, personalized virtual desktops as a managed service from a virtualization platform, built to deliver the entire desktop, including the operating system, applications, and data. With VMware View, desktop administrators virtualize the operating system, applications, and user data and deliver modern desktops to end-users. VMware View provides centralized automated management of these components for increased control and cost savings. It improves business agility while providing a flexible high performance desktop experience for end-users across a variety of network conditions.

VMware View brings the agility and availability of cloud computing to the desktop and applications. Built on VMware vSphere, View delivers desktops from a single integrated platform as part of your cloud services. You can dynamically allocate resources to enable highly responsive and available environment to end-users. You can scale up and down desktop services on demand to quickly meet changing business needs and proactively protect against planned and unplanned downtime. You can run your desktops as business critical services for your workforce.

VMware View increases control of desktops, applications and data by delivering and managing them as centralized services. A single, powerful administrative console provides oversight of desktop services while enabling IT to execute previously cumbersome tasks such as provisioning, updates, and patches, with a few mouse clicks. You can manage desktop components separately for greater flexibility in provisioning, updates, and delivery. You can easily apply policies and quickly enable and disable users, all from a centralized console for optimal business response. View frees up time from maintenance for technology innovation.

Radware Alteon and VMware View Server Architecture

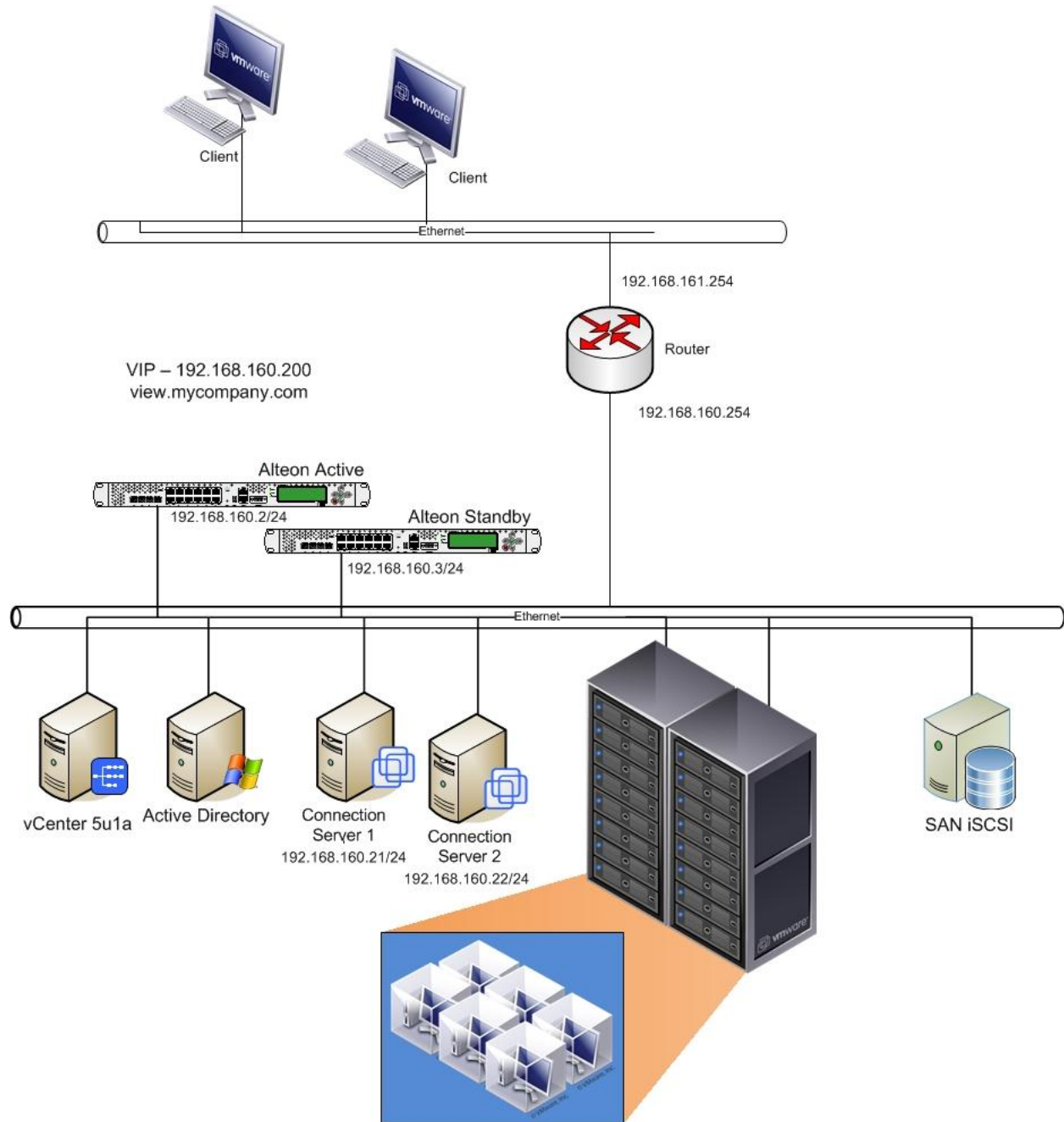


FIGURE 1 – TESTED EXAMPLE CONFIGURATION

Important Implementation Notes

1. Throughout this guide, reference is made to the "Radware" pre-configured certificate, but you can import a certificate or create a new certificate in Alteon. For more information on exporting, importing, or creating a certificate, see the *Alteon Application Switch Operating System Application Guide*.
2. In this architecture, Alteon offloads the SSL traffic and encrypts it again to the server side in a lower cypher mode.

Software and Hardware

The following is a list of the hardware and software tested to verify the interoperability of the presented solution:

- Microsoft Windows 2008 R2 x64bits
- Radware Alteon version 28.1.6
- VMware View Connection, Agent and client v.5.1
- VMware vCenter 5.u1a

Configuration

ALTEON ACTIVE CONFIGURATION

Network Configuration

```
/c/port 1
  pvid 600
/c/l2/vlan 1
  learn ena
  def 2
/c/l2/vlan 600
  ena
  name "600"
  learn ena
  def 1
/c/l2/stg 1/clear
/c/l2/stg 1/add 1 600
/c/l3/if 1
  ena
  ipver v4
  addr 192.168.160.2
  vlan 600
/c/l3/gw 1
  ena
  ipver v4
  addr 192.168.160.254
```

Sync Configuration

```
/c/slb/sync
  prios d
  certs e
  state e
/c/slb/sync/peer 1
  ena
  addr 192.168.160.3
```

PIP Configuration

```
/c/slb/pip/type vlan
/c/slb/pip/type port
/c/slb/pip/add 192.168.160.201 1
```

Compression Configuration

```
/c/slb/accel/compress
  on
/c/slb/accel/compress/comppol 1
  name "comp.pol"
```

```
minsize 1024
ena
```

Real Servers Configuration

```
/c/slb/real 1
  ena
  ipver v4
  rip 192.168.160.21
  name "View.Connector.1"
/c/slb/real 2
  ena
  ipver v4
  rip 192.168.160.22
  name "View.Connector.2"
```

Server Groups Configuration

```
/c/slb/group 1
  ipver v4
  metric phash 255.255.255.255
  add 1
  add 2
  name "View.connectors"
```

Alteon process directions

```
/c/slb/port 1
  client ena
  server ena
  proxy ena
```

Virtual Services Configuration

```
/c/slb/virt 15
  ena
  ipver v4
  vip 192.168.160.200
  vname "View.vip"
/c/slb/virt 15/service 443 https
  group 1
  dbind forceproxy
/c/slb/virt 15/service 443 https/http
  compol 1
/c/slb/virt 15/service 443 https/ssl
  svrcert cert 1
  sslpol 1
/c/sys/access/https/cert WebManagementCert
/c/sys/access/https/https e
```

SSL Configuration

```
/c/slb/ssl/certs/key 1
/c/slb/ssl/certs/import key "1" text
-----BEGIN RSA PRIVATE KEY-----
Proc-Type: 4,ENCRYPTED
DEK-Info: DES-EDE3-CBC,E3E2F8D480809629

NpQM3DguzTp3d4+YfMUdM276d8BDz5eGopFO0wfIlp1PJKnAA3j5s/u3fG3o50Yx
14hxcvdTWMTYPQ2x8jIz2gYi3oGDDTyr4GbRzZINsCISQuSEnE3Je95fRIDIGs1y
8+33W3/U1+7IRIooC5RbYb006d5AsO+Yohs1+IuHeu7fa3KSnobndhrc6SgxKp4J
es6+vqUGIEzKaQOXcCE9IVRSwKsIUPSz6xqFS3H7fy24q7sMKG36p/2dN8H5hEQJ
2kE9qEEYVG2It5B0ecBzeC/gJLppuYmtk/I/INV+DJFzzWrxfhSke+zauFtBQIE0
vmmaeD3cWWGxoa64JLJMY3Qq7JsjkuUPI7KeZfsazsAv3rFOY0mQrp5pxgcSpZ2
KGshSO6Ynng5K4zPeQmTCpeyMM/j+T9PzWLLxguJZQ65QzL6mg7o6qLpowQzIOJx
qQcGvMCXK8PjmsbtKJnxxT47eQ0V1YCKaQPqt2mxxeUVqWcJ9FFJDKsQrvJPGItN
/UZn8IXNdPLaYu7+N/vhCVlCTCoVZCtyXq9ZOoraVXygygQn7qQC/kcdPtlCAVJi
EZdGTAfBWuKuGRDvldl+aF+VtaaX5CUmdJbRQeNoRbtiPKIC9HvDhBIVSp+bb7q/
A2gi1deo0PZdOS1nJ8k0bEqz+ybTfb1v/WzWqA+2RNaM7RpQBDjqTWX8mNGFOyPd
kfGtxmcif5v/Pej4HU3G61T1ZcOAdJx5u9EyhHa+xSkwxCTVmf00Fr83jvalWztI
3goquVtm9YtafDx3EXLX/I/Zd0iX+w87Q8EjC1dFLqukKIPxMX02uw==
-----END RSA PRIVATE KEY-----
```

```
/c/slb/ssl/certs/srvrcert 1
    name "view"
/c/slb/ssl/certs/import srvrcert "1" text
-----BEGIN CERTIFICATE-----
MIICrDCCAhhWgAwIBAgIEUBI/IDANBgkqhkiG9w0BAQUFADAqMRswGQYDVQQDEExJ2
aWV3LnBzcmFkd2FyZS5jb20xCzAJBgNVBAYTAKIMMB4XDTEyMDg0ODIyMTUwMDUw
DTEzMDg0ODIyMTUwMDUwFowKjEbmBkGA1UEAxMSdmlldy5wc3JhZHdhcmUuY29tMQsw
CQYDVQQGEWJJTDCBnzANBgkqhkiG9w0BAQEFAAOBjQAwgYkCgYEAp7udleQVySwq
ELd4M4xIGLdF6NSKkEexqpWpCpPaDmcqnuYDeP7Q9UtGA2hiBaUSp4QvICGpSZ/Y6
dFCr9iAy60JkLkHbskpfm3AZ6VxV4d9aNRXRlRs7tp9U9EwbDRyKX6ShzfY4maN
RC0/jOxYDhL/j9urLuRbxFC5f2lxERcCAwEAaA0B3jCB2zAPBgNVHRMBAf8EBTAD
AQH/MBEGCWCsAGG+EIbAQQEawICRDAYBgIghkgBhvCAQ0EJRYjQWx0ZW9uL05
v
cnRlbcBHZW5lcmF0ZWQgQ2VydGlmaWNhdGUwHQYDVRR0OBByEFJ7yuE6zgHKfbTLD
mFCta0Ikp87JMFUGA1UdIwROMEyAFJ7yuE6zgHKfbTLDmFCta0Ikp87JoS6kLDAq
MRswGQYDVQQDEExJ2aWV3LnBzcmFkd2FyZS5jb20xCzAJBgNVBAYTAKIMggRQGx8g
MAsGA1UdDwQEAwIC5DANBgkqhkiG9w0BAQUFAAOBgQA7bIU4SjP4zAiK+pw/Wisk
PMk24t1jCj5iwoBLLI70CoScAHQH1HIOw4Nu1jCckYinw3neotjyiuAdv1jjFz3O
O9mWD32uqPSIVdzDUHH2tKY7JNkZ4INGADR6qhHBI0qjUrtkDlqHlKEFdeWkGv+Z
poWF8/qopvUqwnXkbhvkSQ==
-----END CERTIFICATE-----
```

```
/c/slb/ssl
    on
/c/slb/ssl/sslpol 1
    name "View.pol"
    convert disabled
    bessl enabled
```

ena

VRRP Configuration

/c/l3/vrrp/on

/c/l3/vrrp/vr 1

ena

ipver v4

vrid 1

if 1

prio 200

addr 192.168.160.1

/c/l3/vrrp/vr 2

ena

ipver v4

vrid 2

if 1

prio 200

addr 192.168.160.200

ALTEON STANDBY CONFIGURATION**Network Configuration**

```
/c/port 1
    pvid 600
/c/l2/vlan 1
    learn ena
    def 2
/c/l2/vlan 600
    ena
    name "600"
    learn ena
    def 1
/c/l2/stg 1/clear
/c/l2/stg 1/add 1 600
/c/l3/if 1
    ena
    ipver v4
    addr 192.168.160.3
    vlan 600
/c/l3/gw 1
    ena
    ipver v4
    addr 192.168.160.254
```

PIP Configuration

```
/c/slb/pip/type vlan
/c/slb/pip/type port
/c/slb/pip/add 192.168.160.202 1
```

Sync Configuration

```
/c/slb/sync
    pips e
    certs e
    state e
/c/slb/sync/peer 1
    ena
    addr 192.168.5.2
```

VRRP Configuration

```
/c/l3/vrrp/on
/c/l3/vrrp/vr 1
    ena
    ipver v4
    vrid 1
    if 1
    addr 192.168.160.1
/c/l3/vrrp/vr 2
    ena
```

ipver v4
vrid 2
if 1
addr 192.168.160.200

VMWARE VIEW CONNECTION SERVERS (CONNECTION 1)

- IP Address - 192.168.160.21/24
- DG - 192.168.160.254

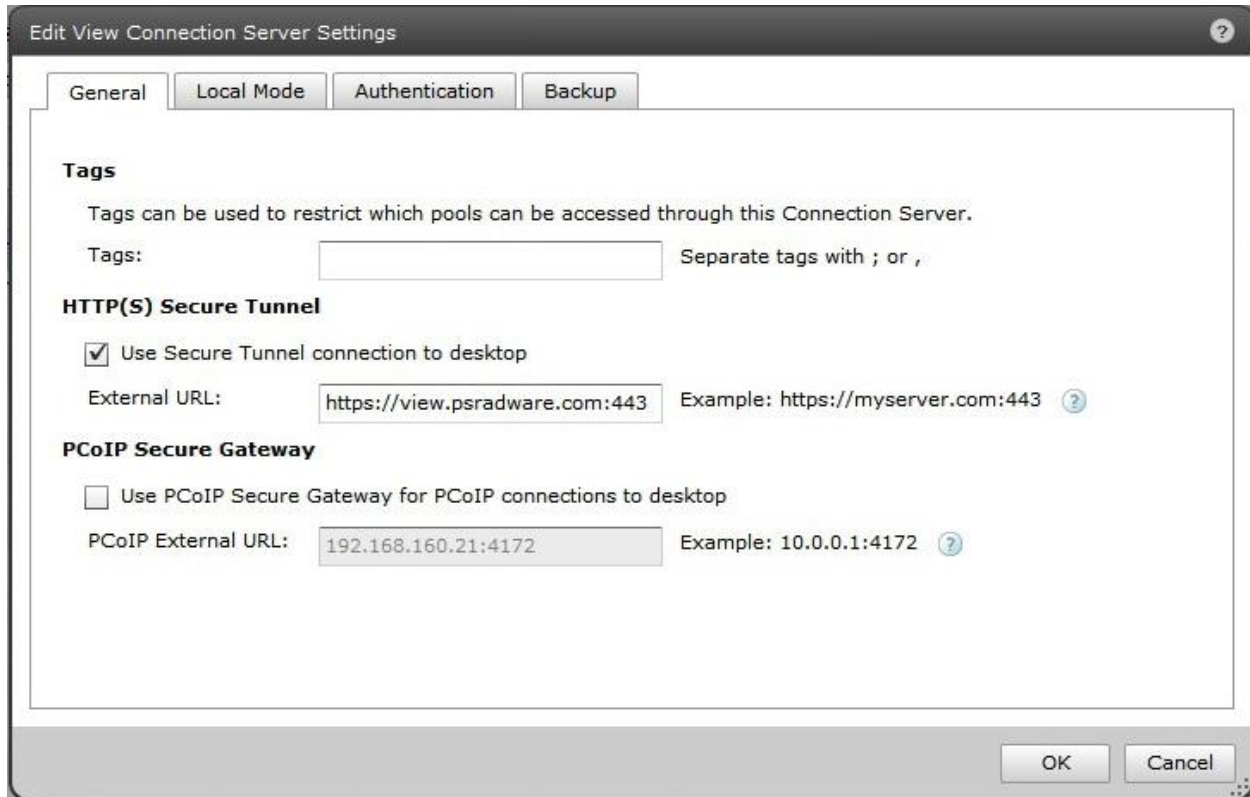
VMWARE VIEW CONNECTION SERVERS (CONNECTION 2)

- IP Address - 192.168.160.22/24
- DG - 192.168.160.254

VMware View Connection Servers

CONFIGURE VMWARE VIEW CONNECTION GLOBAL SETTINGS

1. Go to View Configuration > Servers and edit each connection server, add the External URL name 'https://view.mycomapny.com:443' (this will be the name that the clients are pointing to)



Appendix - I

ALTEON ACTIVE DEVICE FULL CONFIGURATION SCRIPT

```
script start "Alteon Application Switch VA" 4 /**** DO NOT EDIT THIS LINE!
/* Configuration dump taken 10:24:45 Wed Aug 22, 2012
/* Configuration last applied at 10:21:16 Wed Aug 22, 2012
/* Configuration last save at 10:21:18 Wed Aug 22, 2012
/* Version 28.1.6.10, Mgmt MAC address 00:50:56:a3:29:f4
/* When restoring this configuration, provide the same
/* passphrase used to encrypt the private keys.
/c/sys/mmgmt
  dhcp disabled
  addr 10.210.99.131
  mask 255.255.0.0
  broad 10.210.255.255
  gw 10.210.1.1
  ena
  tftp mgmt
```

```
/c/sys
  idle 10080
/c/sys/access
  http ena
  tnet ena
/c/port 1
  pvid 600
/c/l2/vlan 1
  learn ena
  def 2
/c/l2/vlan 600
  ena
  name "600"
  learn ena
  def 1
/c/l2/stg 1/clear
/c/l2/stg 1/add 1 600
/c/sys/sshd/ena
/c/sys/sshd/on
/c/l3/if 1
  ena
  ipver v4
  addr 192.168.160.2
  vlan 600
/c/l3/gw 1
  ena
  ipver v4
  addr 192.168.160.254
/c/l3/vrrp/on
/c/l3/vrrp/vr 1
  ena
  ipver v4
  vrid 1
  if 1
  prio 200
  addr 192.168.160.1
/c/l3/vrrp/vr 2
  ena
  ipver v4
  vrid 2
  if 1
  prio 200
  addr 192.168.160.200
/c/slb/accel/compress
  on
/c/slb/accel/compress/comppol 1
  name "comp.pol"
  minsize 1024
  ena
/c/slb/ssl/certs/key 1
/c/slb/ssl/certs/import key "1" text
```

```
-----BEGIN RSA PRIVATE KEY-----
```

```
Proc-Type: 4,ENCRYPTED
```

```
DEK-Info: DES-EDE3-CBC,E3E2F8D480809629
```

```
NpQM3DguzTp3d4+YfMUdM276d8BDz5eGopFO0wfIIP1PJKnAA3j5s/u3fG3o50Yx
14hxcvdTWMTPYQ2x8jIz2gYi3oGDDTYr4GbRzZINsCISQuSEnE3Je95fRIDIGs1y
8+33W3/U1+7IRIooC5RbYb006d5AsO+Yohs1+IuHeu7fa3KSnobndhrc6SgxKp4J
es6+vqUGIEzKaQOXcCE9IVRSwKsIUPSz6xqFS3H7fy24q7sMKG36p/2dN8H5hEQJ
2kE9qEEYVG2It5B0ecBzeC/gJLppuYMTk/I/INV+DJFzzWrxfhSke+zauFtBQIE0
vmmaeD3cWWGxoa64JLJMY3Qq7JsjkuUPI7KeZfsazsAv3rFOY0mQrp5pxgcSpZ2
KGshSO6Ynng5K4zPeQmTCpeyMM/j+T9PzWILxguJZQ65QzL6mg7o6qLpowQzIOJx
qQcGvMCXK8PjmsbtKJnxxT47eQ0V1YCKaQPqt2mxxeUVqWcJ9FFJDKsQrvJPGItN
/UZn8IXNdPLaYu7+N/vhCVlcTCovZCtyXq9ZOoraVXygygQn7qQC/kcdPtICAVJi
EZdGTAfBWuKuGRDvldl+aF+VtaaX5CUmdJbRQeNoRbtiPKIC9HvDhBIVSp+bB7q/
A2gi1deo0PZdOS1nJ8k0bEqz+ybTfb1v/WzWqA+2RNaM7RpQBDjqTWX8mNGFOyPd
kfGtxmcf5v/Pej4HU3G61T1ZcOAdJx5u9EyhHa+xSkwxCTVmf00Fr83jvalWztI
3goquVtm9YtafDx3EXLX/l/Zd0iX+w87Q8EjC1dFLquKIPxMX02uw==
```

```
-----END RSA PRIVATE KEY-----
```

```
/c/slb/ssl/certs/key WebManagementCert
```

```
/c/slb/ssl/certs/import key "WebManagementCert" text
```

```
-----BEGIN RSA PRIVATE KEY-----
```

```
Proc-Type: 4,ENCRYPTED
```

```
DEK-Info: DES-EDE3-CBC,AA0739D0B2C8AC42
```

```
EmQclLVcX4H8w8wUa/fPgcCtFXA5gNJsR4/Ztjfn5iBpbxguuHixzsmevGgQT1y
jmWjnTN/eOjMSGBWTweknriuI7XJVI+1QbxNi8duJC4e6OISOIx87z+DkRCp4U2q
Er1uD1LCD4G1mT8jCvnbj76jqCxPcovuUoVsxFCe8+62J/nIw/3o93RkcxZEfs7
Jfp7Be4SqmQC2nqM+NzGrFFS7ZnJUAZPqNxVhrWYrISsisr8AtzpmPavy00DO+XV
AMdkj9L7e834MHbMXsa5TLDOtQIYfZVMM0re0bIZ0X2yB8IN3T1orTUOq5sl+uL/
uWZ/tIX0TlshwdC9qAEGx44/nEEssygOGAKaDD+NT0Eq+1zlBo17mMrG2nf+S38i
gAqNLeCsa9YGJWCcr10Wx0TxUIqHPY6pF/zBgTvdyl4LpyEb0JiX0+Isr/y0Uy4
TIL7w5A/jaQbfjHQLiZsOFrgt8pmEOAQkluc4UDMmUQ0MDQOC/xgF3IRIjrSF5V7
2NROIYSPEGwl8ckQhbmQ7ChCsAHYSV+ojdBckEy0Ey3VhGwABx6CIyPRPblxIe6
CJ6Q3upQevPUTP2ZXxuZ6wl5JV++w7ETeXhMzR9W5PRMo4T4QQ2t8gGp/XisX95H
i/UTfjAuDhpl2ssk6cTIQTbIWQW6OZQmDId5QwE96ycjnKeFRKyB7quQ6UqTfaAG
Oipqbyv/GRYYmyUpjBMuN4jjoDcRK/HyC7gYRZp5aWFyPYLw2zSB0/4PykKmx5jb
X2pVzyPaKsaKTHS73MgballNrSF+STksKMD+BHZg2vTTXlJn/el5g==
```

```
-----END RSA PRIVATE KEY-----
```

```
/c/slb/ssl/certs/request 1
```

```
/c/slb/ssl/certs/import request "1" text
```

```
-----BEGIN CERTIFICATE REQUEST-----
```

```
MIIBaTCB0wIBADAqMRswGQYDVQQDEJ2aWV3LnBzcmFkd2FyZS5jb20xCzAJBgNV
BAYTAKIMMIGfMA0GCSqGSIb3DQEBAQUAA4GNADCBiQKBgQCnu52V5BXJLCoQt3gz
jEgYt0Xo1IqQR7GqnA9w9oOZyqe5gN4/tD1S0YDaGIFpRKnHC+UIalJn9jp0UKv2
IDLrQmQuQduySI+bcBnpXFXh31o1FdmstGzu2n1T0TBSNHlfpKHN9jiZo1ELT+M
7FgOEv+P26su5FvEULI/aXERFwIDAQABAAAwDQYJKoZIhvcNAQEFBQADgYEAjE4y
PLcfSCVqRAoI5gxucNgoaNVzjoE4tZsDh9BNho6YOAj4leHW53On+cawGdsUUE7L
5HbhnTYmpVQ1gPlyd+r6LwKqVEyuVOq1aIoEYzb5qmyI+eT1OZR4U0dIWxv7cLtB
QPny0tZ7898mcrvmJ2Zp9yIFhELMKqXyxB0jCQ=
```

-----END CERTIFICATE REQUEST-----

```
/c/slb/ssl/certs/request WebManagementCert
/c/slb/ssl/certs/import request "WebManagementCert" text
-----BEGIN CERTIFICATE REQUEST-----
MIIBazCB1QIBADAsMSowKAYDVQQDFCFEZWZhdWx0X0dlbmVyYXRIZF9BbHRlb25f
QkJJX0NlcnQwgZ8wDQYJKoZIhvcNAQEBBQADgY0AMIGJAoGBAL/h1TwFHBqSgMPC
rZMTTeaTsyIUS+GrboNRA7LjayJngITYSSyajtkgv7BAGBwCJs1O5d5WZQH9tbDLp
+tIDr/ATth+rY4XxjGgY+PAApVjatLosuk9iB/Pm8+97oFFucQUUzI/FoNL1IR3c
XVXSa1UivOGVok8JTjsUor0+/a45AgMBAAGgADANBgkqhkiG9w0BAQQFAAOBgQBP
FhxOQ8cnYIkQNYaldBJKJlvHSu8Nn/PmtxaGocacY0vtSxq3Nvm75+HxSF4nt2iN
QiD9SkPFdN8v+5CuSbFZgY3t3ijtUQ7vux37s0MFiEBDZIDANZZzNzzTaGcodWV9
FGyKkFt6iwtSIFTseLwO0pZB00AYv9uw7JzX05NVpg==
-----END CERTIFICATE REQUEST-----
```

```
/c/slb/ssl/certs/srvrcert 1
  name "view"
/c/slb/ssl/certs/import srvrcert "1" text
-----BEGIN CERTIFICATE-----
MIICrDCCAhhWgAwIBAgIEUBI/IDANBgkqhkiG9w0BAQUFADAqMRswGQYDVQQDEJ2
aWV3LnBzcmFkd2FyZS5jb20xOjEwLmF1dG8uY29udG8uY29udG8uY29udG8uY29u
DTEzMDgwMTE5MzY0OFowKjE2bGkGA1UEAxMSdmlldy5wc3JhZhdhcmUuY29tMQsw
CQYDVQQGEWJTTDCBnzANBgkqhkiG9w0BAQEFAAOBjQAwgYkCgYEAp7udleQVvSwq
ELd4M4xIGLdF6NSKkEexqpWpCpaDmcqnuYDeP7Q9UtGA2hiBaUSp4QvICGpSZ/Y6
dFCr9iAy60JkLkHbskpfm3AZ6VxV4d9aNRXZrLRs7tp9U9EwbDRyKX6ShzfY4maN
RC0/jOxYDhL/j9urLuRbxFC5f2lxERcCAwEAAaOB3jCB2zAPBgNVHRMBAf8EBTAD
AQH/MBEGCWCGSAGG+EIBAQQEAwICRDAYBgIghkgBhvCAQ0EJRYjQWx0ZW9uL05
v
cnRlbCBHZW5lcmF0ZWQgQ2VydGImaWNhdGUwHQYDVR0OBBYEFJ7yuE6zgHKfbTLD
mFCta0Ikp87JMFUGA1UdIwROMEyAFJ7yuE6zgHKfbTLDmFCta0Ikp87JoS6kLDAq
MRswGQYDVQQDEJ2aWV3LnBzcmFkd2FyZS5jb20xOjEwLmF1dG8uY29udG8uY29u
MAsGA1UdDwQEAwIC5DANBgkqhkiG9w0BAQUFAAOBgQA7bIU4SjP4zAiK+pw/Wisk
PMk24t1jCj5iwoBLLI70CoScAHQH1HIOW4Nu1jCckYinw3neotjyiuADv1jjFz3O
O9mWD32uqPSIVdzDUHH2tKY7JNkZ4INGADR6qhHBI0qjUrtkDIqHlKEFdeWkgv+Z
poWF8/qopvUqwnXkvbhvkSQ==
-----END CERTIFICATE-----
```

```
/c/slb/ssl/certs/srvrcert WebManagementCert
/c/slb/ssl/certs/import srvrcert "WebManagementCert" text
-----BEGIN CERTIFICATE-----
MIICsjCCAhuGAwIBAgIEUBI/HzANBgkqhkiG9w0BAQQFADAsMSowKAYDVQQDFCFE
ZWZhdWx0X0dlbmVyYXRIZF9BbHRlb25fQkJJX0NlcnQwHhcNMTIwODAxMTkxMDIz
WhcNMTIwODAxMTkxMDIzWjAsMSowKAYDVQQDFCFEZWZhdWx0X0dlbmVyYXRIZF
9B
bHRlb25fQkJJX0NlcnQwgZ8wDQYJKoZIhvcNAQEBBQADgY0AMIGJAoGBAL/h1TwF
HBqSgMPCrZMTTeaTsyIUS+GrboNRA7LjayJngITYSSyajtkgv7BAGBwCJs1O5d5WZ
QH9tbDLp+tIDr/ATth+rY4XxjGgY+PAApVjatLosuk9iB/Pm8+97oFFucQUUzI/F
oNL1IR3cXVXSa1UivOGVok8JTjsUor0+/a45AgMBAAGjgeAwgd0wDwYDVR0TAQH/
BAUwAwEB/zARBglghkgBhvhCAQEEBAMCAkQwMgYJYIZIAyb4QgENBCUWI0FsdGVv
bi90b3J0ZWwgR2VuZXJhdGVkIENlcnRpZmljYXRIMB0GA1UdDgQWBQKlJvAu6uJ
ctPMJ49tExiJkWyO/TBxBgNVHSMiEUDBoGQKlJvAu6uJctPMJ49tExiJkWyO/aEw
```



```
pC4wLDEqMCgGA1UEAxQhRGVmYXVsdF9HZW5lcmF0ZWRfQWx0ZW9uX0JCSV9DZX
J0
ggRQGX8fMAsGA1UdDwQEAwIC5DANBgkqhkiG9w0BAQQFAAObgQAovoxsb6Ti2uLQ
NRuJ9HxD481q9B9jvPXaTITwBhIKGrIFj+JJKD1jn8I9I/Plbf6jx+Js1uL021BU
+w1BcSJOj2pjJTXT7VMH01vXHICLJ6kpX55jIycKNdrjduhyfH59daYGxyZtWiI
KAI2jH/eKKOzHtaIVgjEAXFDLL6kpg==
-----END CERTIFICATE-----
```

```
/c/slb/sync/passphrs
9beb0aa18aaa0aa1f2a286f67809ba620043c72f08e367910aca70457bb84410
/c/slb/ssl
  on
/c/slb/ssl/sslpol 1
  name "View.pol"
  convert disabled
  bessl enabled
  ena
/c/slb
  on
/c/slb/sync
  prios d
  certs e
  state e
/c/slb/sync/peer 1
  ena
  addr 192.168.160.3
/c/slb/real 1
  ena
  ipver v4
  rip 192.168.160.21
  name "View.Connector.1"
/c/slb/real 2
  ena
  ipver v4
  rip 192.168.160.22
  name "View.Connector.2"
/c/slb/group 1
  ipver v4
  metric phash 255.255.255.255
  add 1
  add 2
  name "View.connectors"
/c/slb/pip/type vlan
/c/slb/pip/type port
/c/slb/pip/add 192.168.160.201 1
/c/slb/port 1
  client ena
  server ena
  proxy ena
/c/slb/virt 15
  ena
```

```
ipver v4
vip 192.168.160.200
vname "View.vip"
/c/slb/virt 15/service 443 https
group 1
dbind forceproxy
/c/slb/virt 15/service 443 https/http
comppol 1
/c/slb/virt 15/service 443 https/ssl
svrcert cert 1
sslpol 1
/c/sys/access/https/cert WebManagementCert
/c/sys/access/https/https e
/
script end /**** DO NOT EDIT THIS LINE!
```

ALTEON STANDBY DEVICE FULL CONFIGURATION SCRIPT

```
script start "Alteon Application Switch VA" 4 /**** DO NOT EDIT THIS LINE!
/* Configuration dump taken 13:25:23 Wed Aug 22, 2012
/* Configuration last applied at 15:13:00 Tue Aug 21, 2012
/* Configuration last save at 15:15:18 Tue Aug 21, 2012
/* Version 28.1.6.10, Mgmt MAC address 00:50:56:a3:29:f7
/* When restoring this configuration, provide the same
/* passphrase used to encrypt the private keys.
/c/sys/mgmt
    tftp mgmt
/c/sys/access
    http ena
    tnet ena
/c/port 1
    pvid 600
/c/l2/vlan 1
    learn ena
    def 2
/c/l2/vlan 600
    ena
    name "600"
    learn ena
    def 1
/c/l2/stg 1/clear
/c/l2/stg 1/add 1 600
/c/sys/sshd/ena
/c/sys/sshd/on
/c/l3/if 1
    ena
    ipver v4
    addr 192.168.160.3
    vlan 600
/c/l3/gw 1
    ena
    ipver v4
    addr 192.168.160.254
/c/l3/vrrp/on
/c/l3/vrrp/vr 1
    ena
    ipver v4
    vrid 1
    if 1
    addr 192.168.160.1
/c/l3/vrrp/vr 2
    ena
    ipver v4
    vrid 2
    if 1
    addr 192.168.160.200
```

```
/c/slb/accel/compress
  on
/c/slb/accel/compress/comppol 1
  name "comp.pol"
  minsize 1024
  ena
/c/slb/ssl/certs/key 1
/c/slb/ssl/certs/import key "1" text
-----BEGIN RSA PRIVATE KEY-----
Proc-Type: 4,ENCRYPTED
DEK-Info: DES-EDE3-CBC,55F93A3FC2BC5B2D
```

```
aRTIL8ZliRTdioTCGwiZXtu+gelYinX6pZZUZJxx/S/qMdKJnhilk9iKmroYssFg
xP+BSmCHUYbIy8JFF8AFA8/3xJX7Vjn8QkC5H7p9HXWWy5ddt5MDgbs+Rv9zPbh
IYpSWECTSSK3ZyFnDtUn0rFxBekLYHIRXAQhCGRzeTf5h/IrPvP0CuxdY7gommC
lfiGQ8C3iIDcDQq4CzJ1gFpjRiHfM93tbIrTgyEkc9KOqr0CseQAK+jjrub0XNbl
pC0n3Bj3J8AD6OFoOXsRoH9bvfykItCJfN9GfnVJ7Uo+u6lGyu0XKRHzNyD6B+3o
7X/w3ANIopprfwEOD88VJMW2RyfRtgTtcG4VFYcHZkOb56EIEcMS/EjzPUNAdc22
qwf559fB3IEzgbFOokgiVZE9i8gc4mHssSj3tshfy8pReapeZNDs4yNtuf7U9AbZ
K9h+nfSXWBhay6YXi7zOuuJYVllcJNjL/k1R3qbKpCUOoPgR6amUdPg80z+qumD7
PuJo5SGnwf5dFkyAZGLk5FUikKYQMzgxkFjfbFXMcVM6f9pZiQiBYbagQyM0Xf
8XoL2EZYyqtdVX5WSTCjX9ADygtweCqL/Lg9VCqne+5jkEohnC3ePlwUWreZ6Tlz
kA0hO0QVpW1AN1hAynGE+S7oUQRVJZpefBg1gxYB1ybw1HZ+ff3KNcShLh8T1hNp
ia8P9c2dniZ+8h7C+1TpUro9fQqBKNVwfSs7HeqDMUAFFtB9OM4UiUJwNBhCk4W0
9JPNMh/Jv91MAfUM5giO7XXP7qIE9j0OVpmJUTpSCfvMa7drkGuhrQ==
-----END RSA PRIVATE KEY-----
```

```
/c/slb/ssl/certs/key WebManagementCert
/c/slb/ssl/certs/import key "WebManagementCert" text
-----BEGIN RSA PRIVATE KEY-----
Proc-Type: 4,ENCRYPTED
DEK-Info: DES-EDE3-CBC,D22895688C2C38EF
```

```
F/gGYKkjDodxQIZc8syHE2cGsomhwKRVdDbBHBumGkxWeeeV9XGw8LkN1oVqCPpp
ya2icaTBBeFN1eA6mYrSrpmpBbNIqTRZMY76SgN64INWsrHL3Yi/yLBHFIWBjJEP
W6aZfIn7YqcWphSSDASGbefeVg+b2NvhzCzMk7Bjf9LpdZom3F0fpVEXTskhjkDT
tM4Am5HV5siIBow8SQKJqJqR9AIBic8txfQk53orzVgvg1JJro5TFDiCcm34Kz+t
JXbzTpxKaPoLW3iBv2+Oycg0qcLThck6hqlbvOuUiMsa7SOw1OxSBH4TGLgnzLj8
I50IVHsxIZ7kbJyMJ/jnc0zCgzVVYX6V7xpfJJKrhADGHn33SDd/OzdQeXrJRRKd
rjr9H9W/ZIZVL2AMaQOQy94qyW817b7nE7LrwtUSPSRnSi8REC+FRDNQNWGCIeT7
efSPIIMshmRKgd6eFBbozjRrmfy9I/JhfCijBOdxSbuGykdxVDt15oSMpRXPAN8X
lmg1B1eHbN+GhRIDAarUpp3E3wOPbzjZfHgNkuS4V/+BE56b/ADnPhQ03QzqCFYP
ijOCDUy9p3RCvvrBGrU4PYWERU8U+t4X39XdBxn6P6lRcWPA3yuRhr6WkKNze7y9
GsNc8PfHjOfYvCnUvUmgTW0xU7h2ar4W+7OnQx7KrzyazLLWhXYm3SB/377ggZeD
ddBIMOzDf9iTMWQgzofokpPqNiFY3wLo0z0ZqneQrd5LdGe+6Ag0Oqc4cF6TN4LE
gdpNDTKDpmCKwKB2EReBYI6pVjy4dTRPcVN3c6vUiBoty8hP+Kn84Q==
-----END RSA PRIVATE KEY-----
```

```
/c/slb/ssl/certs/request 1
/c/slb/ssl/certs/import request "1" text
-----BEGIN CERTIFICATE REQUEST-----
```

```

MIIBaTCB0wIBADAqMRswGQYDVQQDExJ2aWV3LnBzcmFkd2FyZS5jb20xCzAJBgNV
BAYTAkIMMIGfMA0GCSqGSIb3DQEBAQUAA4GNADCBiQBgQCnu52V5BXJLCoQt3gz
jEgYt0Xo1IqQR7GqnA9w9oOZyqe5gN4/tD1S0YDaGIFpRKnHC+UIaIjN9jp0UKv2
IDLrQmQuQduySI+bcBnpXFXh31o1FdmstGzu2n1T0TBsNHIpfpKHN9jiZo1ELT+M
7FgOEv+P26su5FvEULI/aXERFwIDAQABoAAwDQYJKoZIhvcNAQEFBQADgYEAjE4y
PLcfSCVqRAoI5gxucNgoaNVzjoE4tzsDh9BNho6YOAJ4leHW53On+cawGdsUUE7L
5HbhnTYmpVQ1gPlyd+r6LwKqVEyuVOq1aIoEYzb5qmyI+eT1OZR4U0dIWxv7cLtB
QPny0tZ7898mcrvmJ2Zp9yIFhELMKqXyxB0jCQ=
-----END CERTIFICATE REQUEST-----

```

```

/c/slb/ssl/certs/request WebManagementCert
/c/slb/ssl/certs/import request "WebManagementCert" text
-----BEGIN CERTIFICATE REQUEST-----

```

```

MIIBazCB1QIBADAsMSowKAYDVQQDFCFEZWZhdWx0X0dlbmVyYXRIZF9BbHRib25f
QkJJX0NlcnQwgZ8wDQYJKoZIhvcNAQEBBQADgY0AMIGJAoGBAL/h1TwFHBqSgMPC
rZMTeaTsyIUS+GrboNRA7LjayJngITYSSyajtkvg7BAGBwCJs1O5d5WZQH9tbDLp
+tIDr/ATth+rY4XxjGgY+PAApVjatLosuk9iB/Pm8+97oFFucQUUzI/FoNL1IR3c
XVXSa1UivOGVok8JTjsUor0+/a45AgMBAAGgADANBqkqhkiG9w0BAQQFAAOBgQBP
FhxOQ8cnYIkQNYaldBJKJlvHSu8Nn/PMtxaGocacY0vtSxq3Nvm75+HxSF4nt2iN
QiD9SkPFdN8v+5CuSbFZgY3t3ijtUQ7vux37s0MFiEBDZIDANZZzNzzTaGcodWV9
FGyKkFt6iwtSIFTseLwO0pZB00AYv9uw7JzX05NVpg==
-----END CERTIFICATE REQUEST-----

```

```

/c/slb/ssl/certs/srvrcert 1
  name "view"
/c/slb/ssl/certs/import srvrcert "1" text
-----BEGIN CERTIFICATE-----

```

```

MIICrDCCAhhWgAwIBAgIEUBI/IDANBqkqhkiG9w0BAQUFADAqMRswGQYDVQQDExJ2
aWV3LnBzcmFkd2FyZS5jb20xCzAJBgNVBAYTAkIMMIB4XDTEyMDgwMTE5MzY0OFoX
DTEzMDgwMTE5MzY0OFowKjEbmBkGA1UEAxMSdmllldy5wc3JhZHdhcmUuY29tMQsw
CQYDVQQGEWJTTDCBnzANBqkqhkiG9w0BAQEFAAOBjQAwgYkCgYEAp7udleQVySwq
ELd4M4xIGLdF6NSKkEexqpWpCpPdmcqnuYDeP7Q9UtGA2hiBaUSp4QvICGpSZ/Y6
dFCr9iAy60JkLkHbskpfm3AZ6VxV4d9aNRXZrLRs7tp9U9EwbDRyKX6ShzfY4maN
RC0/jOxYDhL/j9urLuRbxFC5f2lxERcCAwEAAaOB3jCB2zAPBgNVHRMBAf8EBTAD
AQH/MBEGCWCGSAGG+EIBAQQEAwICRDAYBgIghkgBhvCAQ0EJRYjQWx0ZW9uL05
v
cnRlbcBHZW5lcmF0ZWQgQ2VydGlmaWNhdGUwHQYDVR0OBBYEFJ7yuE6zgHKfbTLD
mFCta0Ikp87JMFUGA1UdIwROMEyAFJ7yuE6zgHKfbTLDmFCta0Ikp87JoS6kLDAq
MRswGQYDVQQDExJ2aWV3LnBzcmFkd2FyZS5jb20xCzAJBgNVBAYTAkIMggRQG8g
MAsGA1UdDwQEAwIC5DANBqkqhkiG9w0BAQUFAAOBgQA7bIU4Sjp4zAiK+pw/Wisk
PMk24t1jCj5iwoBLLI70CoScAHQH1HIOw4Nu1jCckYinw3neotjiuADv1jjFz3O
O9mWD32uqPSIVdzDUHH2tkY7JNkZ4INGADR6qhHBI0qjUrtkDIqHlKEFdeWkGv+Z
poWF8/qopvUqwnXkbhvkSQ==
-----END CERTIFICATE-----

```

```

/c/slb/ssl/certs/srvrcert WebManagementCert
/c/slb/ssl/certs/import srvrcert "WebManagementCert" text
-----BEGIN CERTIFICATE-----

```

```

MIICsjCCAhuGawIBAgIEUBI/HzANBqkqhkiG9w0BAQQFADAAsMSowKAYDVQQDFCFE
ZWZhdWx0X0dlbmVyYXRIZF9BbHRib25fQkJJX0NlcnQwHhcNMTEwODAxMTkxMDIz

```

```

WhcNMTMwODAxMTkxMDIzWjAsMSowKAYDVQQDFCFEZWZhdWx0X0dlbmVyYXRIZF
9B
bHRlb25fQkJJX0NlcnQwgZ8wDQYJKoZIhvcNAQEBBQADgY0AMIGJAoGBAL/h1TwF
HBqSgMPCrZMTeaTsyIUS+GrboNRA7LjayJngITYSSyajtkgv7BAgBWcJs1O5d5WZ
QH9tbDLp+tIDr/ATth+rY4XxjGgY+PAApVjatLosuk9iB/Pm8+97oFFucQUUzI/F
oNL1IR3cXVXSa1UivOGVok8JTjsUor0+/a45AgMBAAGjgeAwgd0wDwYDVR0TAQH/
BAUwAwEB/zARBgIghkgBhvhCAQEEBAMCAkQwMgYJYIZIAYb4QgENBCUWI0FsdGVV
bi9Ob3J0ZWwgR2VuZXJhdGVkIENlcnRpZmljYXRIMB0GA1UdDgQWBbQklJvAu6uJ
ctPMJ49tExiJkWyO/TBxBgNVHSMEUDBOgBQklJvAu6uJctPMJ49tExiJkWyO/aEw
pC4wLDEqMCgGA1UEAxQhRGVmYXVsdF9HZW5lcmF0ZWRFQWx0ZW9uX0JCSV9DZX
J0
ggRQGx8fMAsGA1UdDwQEAwIC5DANBgkqhkiG9w0BAQQFAAObgQAovoxsb6Ti2uLQ
NRuJ9HxD481q9B9jvPXaTITwBhIKGrIFj+JJKD1jn8I9I/Plbf6jx+Js1uL021BU
+w1BcSJOpj2pjJTXT7VMH01vXHICLJ6kpX55jIycKNdrjduhyfH59daYGxyZtWiI
KAI2jH/eKKOzHtaIVgjEAXFDLL6kpg==
-----END CERTIFICATE-----

```

```

/c/slb/sync/passphrs
9e96d9ae8a82c882f7f792a77821784127263c6a730dbc34b34ad99475272d61
/c/slb/gslb/dnssec
    keymaster dis
/c/slb/ssl
    on
/c/slb/ssl/sslpol 1
    name "View.pol"
    convert disabled
    bessl enabled
    ena
/c/slb
    on
/c/slb/sync
    prios d
    certs e
    state e
/c/slb/sync/peer 1
    ena
    addr 192.168.160.2
/c/slb/real 1
    ena
    ipver v4
    rip 192.168.160.21
    name "View.Connector.1"
/c/slb/real 2
    ena
    ipver v4
    rip 192.168.160.22
    name "View.Connector.2"
/c/slb/group 1
    ipver v4
    metric phash 255.255.255.255
    add 1

```

```
    add 2
    name "View.connectors"
/c/slb/pip/type vlan
/c/slb/pip/type port
/c/slb/pip/add 192.168.160.202 1
/c/slb/port 1
    client ena
    server ena
    proxy ena
/c/slb/virt 15
    ena
    ipver v4
    vip 192.168.160.200
    vname "View.vip"
/c/slb/virt 15/service 443 https
    group 1
    dbind forceproxy
/c/slb/virt 15/service 443 https/http
    comppol 1
/c/slb/virt 15/service 443 https/ssl
    svrcert cert 1
    sslpol 1
/c/sys/access/https/cert WebManagementCert
/c/sys/access/https/https e
/
script end /**** DO NOT EDIT THIS LINE!
```

Technical Support

Radware offers technical support for all of its products through the Radware Certainty Support Program. Please refer to your Certainty Support contract, or the Radware Certainty Support Guide available at:

<http://www.radware.com/content/support/supportprogram/default.asp>.

For more information, please contact your Radware Sales representative or:

U.S. and Americas: (866) 234-5763

International: +972(3) 766-8666