

Alteon Application Switch

Optimizing the Delivery of PeopleSoft v.9.2 Solution Guide

Version 1.0, Author: Elad Kurzweil
November 03, 2013



TABLE OF CONTENTS

INTRODUCTION	3
ORACLE PEOPLESOFT 9.2	3
HUMAN CAPITAL MANAGEMENT	3
FINANCIAL MANAGEMENT	3
SUPPLIER RELATIONSHIP MANAGEMENT	3
SERVICES AUTOMATION	4
SUPPLY CHAIN MANAGEMENT	4
PEOPLETOOLS – TOOLS AND TECHNOLOGY	4
RADWARE ALTEON ADC	4
INTEGRATED APPLICATION ACCELERATION CAPABILITIES.....	4
INTELLIGENTLY EMBEDDING RADWARE’S “ON DEMAND” INFRASTRUCTURE APPROACH	5
RADWARE ALTEON AND ORACLE PEOPLESOFT 9.2 ARCHITECTURE	6
IMPORTANT IMPLEMENTATION NOTES	6
SOFTWARE AND HARDWARE.....	7
CONFIGURATION	8
ALTEON ACTIVE CONFIGURATION	8
Network Configuration.....	8
Sync Configuration	8
Real Servers Configuration	9
Server Groups Configuration	9
Alteon Process Directions	9
Virtual Servers and Services Configuration	9
VRRP Configuration.....	10
Compression Configuration	11
SSL Configuration	11
ALTEON BACKUP CONFIGURATION.....	13
Network Configuration.....	13
Sync Configuration	13
VRRP Configuration	14
ORACLE PEOPLESOFT CONFIGURATION	15
APPENDIX A – ALTEON CONFIGURATION SCRIPTS	17
ALTEON ACTIVE CONFIGURATION SCRIPT	17
ALTEON BACKUP CONFIGURATION SCRIPT.....	23

Introduction

Radware's Alteon ADC provides maximum availability, scalability and performance to Oracle PeopleSoft 9.2 customers. It offloads resource intensive processing, provides advanced health monitoring and helps in avoiding system down time to deliver a best-of-breed subsystem. By offering a unique pay-as-you-grow platform licensing model, Alteon ADC ensures long-term investment protection facilitating incremental growth demanded by today's businesses.

Oracle PeopleSoft 9.2

Oracle's PeopleSoft applications are designed to address the most complex business requirements. They provide comprehensive business and industry solutions, enabling organizations to increase productivity, accelerate business performance, and provide a lower cost of ownership.

Oracle's commitment to PeopleSoft continues. Building off a proven 25-year history of best-in-class solutions, PeopleSoft 9.2 delivers revolutionary innovation by creating an improved user experience that fundamentally changes how users interact with PeopleSoft.

In addition to over 1,000 new features and enhancements that make it a robust solution and lower the total cost of ownership, PeopleSoft 9.2 takes the user experience to the next level—with a more intuitive, easy-to-use interface that incorporates the consumer Internet experience.

Human Capital Management

Oracle's PeopleSoft Human Capital Management enables you to architect a global foundation for HR data and improved business processes. PeopleSoft Human Capital Management delivers a robust set of best-in-class human resources functionality that enables you to increase productivity, accelerate business performance, and lower your cost of ownership.

Financial Management

Oracle's PeopleSoft Financial Management leverages best practices to achieve world-class finance processes, meet financial and statutory requirements, and efficiently delivers greater visibility into business-critical information.

Supplier Relationship Management

Oracle's PeopleSoft Supplier Relationship Management is an integrated suite of procurement applications that dramatically cut all supply management costs. PeopleSoft Supplier

Relationship Management reduces spend on goods and services, streamlines procure-to-pay processes, and drives policy compliance.

Services Automation

Oracle's PeopleSoft Services Automation applications enable project-centric organizations and departments to establish core operational processes that support full project lifecycle management across operations and finance, from project selection, planning and staffing, through execution, cost control, and analysis. PeopleSoft Services Automation applications provide a single, accurate view of all project-related activities so you can choose and prioritize the right projects, assign the right resources, proactively streamline execution, and track profitability via accurate budgeting, forecasting, and billings/charge backs.

Supply Chain Management

Oracle's PeopleSoft Supply Chain Management (SCM) provides a cohesive yet flexible solution for the synchronized supply chain, driving efficiencies in cost savings over your entire supply chain—including your plan-to-produce and order-to-cash business processes.

PeopleTools – Tools and Technology

PeopleSoft PeopleTools provides a comprehensive development toolset that supports the development and runtime of PeopleSoft applications. By leveraging metadata and other efficiencies within the toolset, application developers build and customize the PeopleSoft applications quickly and easily. Also, through the use of the delivered, robust, middleware options and the PeopleSoft Integration Broker, PeopleSoft PeopleTools is uniquely positioned to support the Service Oriented Architecture (SOA), the new development standard.

Radware Alteon ADC

Radware Alteon ADC provides breakthrough performance, advanced application acceleration capabilities, and on-demand scalability needed to effectively meet contemporary network and business needs. Specifically designed for the majority of enterprises and carriers that operate in dynamic, ever-changing environments and face diverse requirements, the Alteon ADC provides the extendable throughput they need from 0 to 80 Gbps for unparalleled scalability, business availability, and performance.

Integrated Application Acceleration Capabilities

Alteon ADC delivers a wide set of application acceleration capabilities including SSL offloading, web compression, caching, HTTP multiplexing, and TCP optimization. These capabilities are designed to offload servers, address server performance issues, enhance response-time for

best QoE and mitigate security risks. By offloading processor intensive operations from servers, Alteon frees the servers' CPUs to handle additional requests, eliminating the need to buy additional hardware to support application processing requirements and reducing CAPEX and OPEX.

The Alteon ADC is validated and certified by leading application vendors such as Microsoft, Oracle, SAP, IBM, and others. When operating Alteon ADC with Microsoft SharePoint, for example, the response time of SharePoint servers is accelerated by 350% and the servers' CPU load is reduced by 40%. Similar benefits are achieved with other popular applications.

Application acceleration capabilities have greater importance in virtual data centers where applications suffer from increased latency caused by the virtualization infrastructure. Alteon reduces application latency and improves QoE of virtual applications.

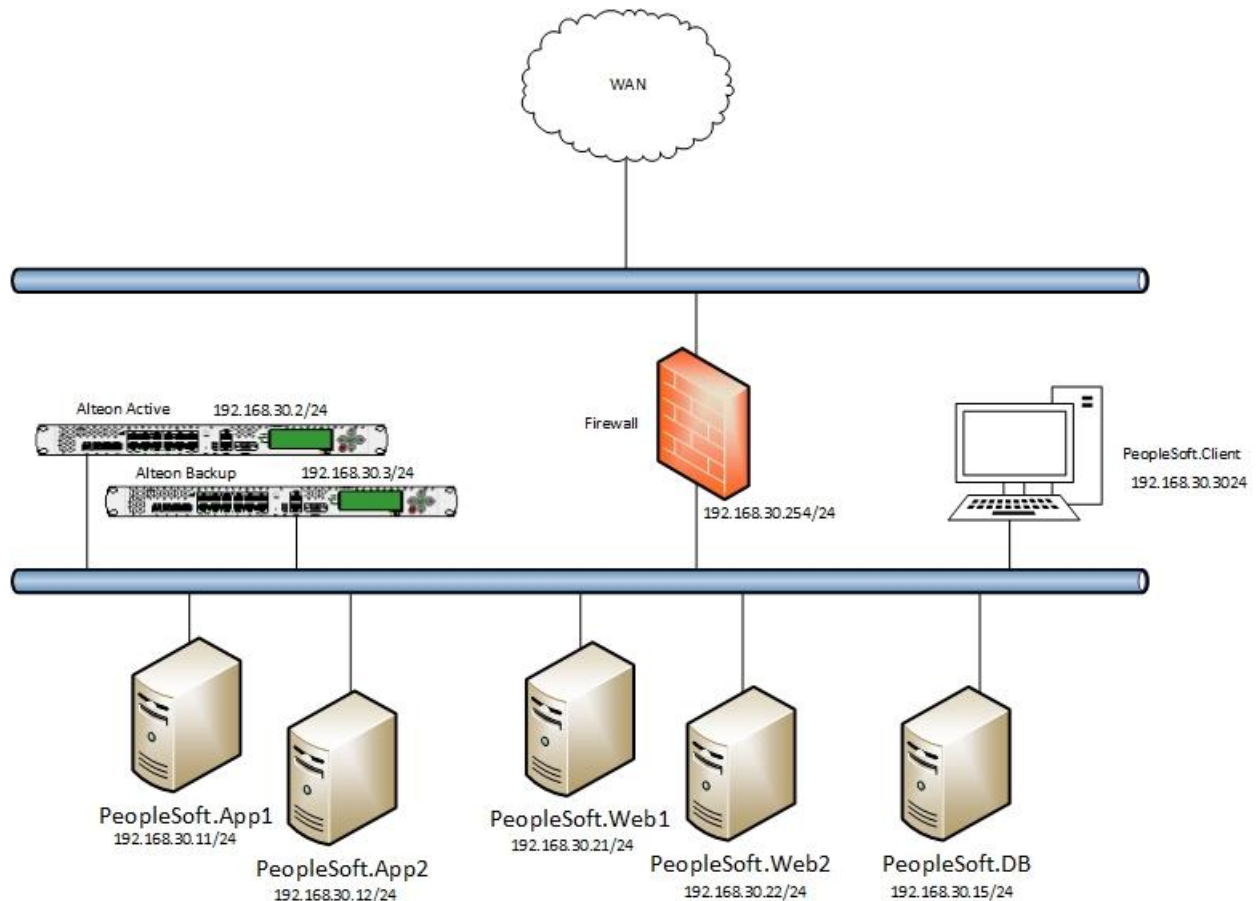
Intelligently Embedding Radware's "On Demand" Infrastructure Approach

By embracing Radware's "Pay-as-you-Grow" approach, you only pay for the exact capacity currently required, preventing over-spending on the initial solution. Throughput capacity, acceleration capabilities and application-aware services can be added on demand to meet new business requirements – with no forklift upgrade of the platform and without even restarting it.

The "Pay-as-you-Grow" approach lets you overcome capacity planning challenges and reduces the risk associated with data center growth for best investment protection. Thanks to platform standardization and simplicity, there are two platforms to cover all of your application needs resulting in fewer spare parts, and less training and operations, dramatically reducing OPEX.

Radware Alteon and Oracle PeopleSoft 9.2 Architecture

Figure 1 — Tested Network Topology



Important Implementation Notes

- Oracle PeopleSoft Web servers are configured by default to work with port 9080.
- To sync configurations after configuring the active Alteon, run the command `/oper/slb/sync` to copy the configuration (Layer 2 and Layer 3 network configurations need to be configured on the Alteon standby device before applying the **sync** command).
- Persistency is used by the Alteon passive cookie mechanism according to "PSJSESSIONID". The cookie can be changed to any name required. For more information, refer to the PeopleSoft documentation set.
- Ensure that you configure a virtual host on the PeopleSoft servers that use the Alteon VIP host name and IP address.

Software and Hardware

The following is the list of hardware and software tested to verify the interoperability of the presented solution:

- Microsoft Windows 2008 R2 sp1 Enterprise servers x64
- Radware's Alteon version 29.0.60 (2 units)
- Oracle PeopleSoft v.9.2

Configuration

Alteon Active Configuration

Network Configuration

```
/c/port 1
  pvid 50
/c/l2/vlan 1
  learn ena
  def 0
/c/l2/vlan 50
  ena
  name "50"
  learn ena
  def 1
/c/l2/stg 1/clear
/c/l2/stg 1/add 1 2 50
/c/sys/sshd/ena
/c/sys/sshd/on
/c/l3/if 1
  ena
  ipver v4
  addr 192.168.30.2
  vlan 50
/c/l3/gw 1
  ena
  ipver v4
  addr 192.168.30.254
```

Sync Configuration

```
/c/slb/sync/passphrs
0a50fa970a005a04e3b3b7def8a3eac767e910b6affe16452bb90ed8ee6a4804

/c/slb/sync
  prios d
  certs e
```



```
/c/slb/sync/peer 1
  ena
  addr 192.168.30.3
/c/slb/sync
  prios d
  certs e
```

Real Servers Configuration

```
/c/slb/real 1
  ena
  ipver v4
  rip 192.168.30.21
  name "PeopleSoft.Server.1"
/c/slb/real 2
  ena
  ipver v4
  rip 192.168.30.22
  name "PeopleSoft.Server.2"
```

Server Groups Configuration

```
/c/slb/group 1
  ipver v4
  metric roundrobin
  add 1
  add 2
  name "PeopleSoft.Group"
```

Alteon Process Directions

```
/c/slb/port 1
  client ena
  server ena
  proxy ena
```

Virtual Servers and Services Configuration

```
/c/slb/virt 1
  ena
```

```
ipver v4
vip 192.168.30.200
vname "PeopleSoft.VIP"
/c/slb/virt 1/service 443 https
group 1
rport 9080
dbind forceproxy
/c/slb/virt 1/service 443 https/http
comppol 1
/c/slb/virt 1/service 443 https/ssl
svrvcert cert 1
sslpol 1
/c/slb/virt 1/service 443 https/pip
mode address
addr v4 192.168.30.201 255.255.255.255 persist disable
/c/slb/real 1/layer7
addlb 1
/c/slb/real 2/layer7
addlb 1
/c/slb/virt 1/service 443 https/pbind cookie passive "PSJSESSIONID" 1
64 disable
/c/slb/virt 1/service 443 https/http/rcount 1
/c/sys/access/https/cert WebManagementCert
/c/sys/access/https/https e
```

VRRP Configuration

```
/c/l3/vrrp/on
/c/l3/vrrp/vr 50
ena
ipver v4
vrid 50
if 1
prio 250
addr 192.168.30.1
/c/l3/vrrp/vr 51
ena
```

```
ipver v4
vrid 51
if 1
prio 250
addr 192.168.30.200
/c/l3/vrrp/vr 52
ena
ipver v4
vrid 52
if 1
prio 250
addr 192.168.30.201
```

Compression Configuration

```
/c/slb/accel/compress
on
/c/slb/accel/compress/comppol 1
name "PeopleSoft.Compression.pol"
minsize 1
ena
```

SSL Configuration

```
/c/slb/ssl/certs/key 1
/c/slb/ssl/certs/import key "1" text
-----BEGIN RSA PRIVATE KEY-----
Proc-Type: 4, ENCRYPTED
DEK-Info: DES-EDE3-CBC, 0E776612EA8D4A85
```

```
TI4jM6a1+LDiC1Nr7Ye7BkNcXfbs0kbluzh/Zv/qBJaIdzfAwL2DARdnlgwJlxyzB
mGfWCD95kw/K3kYfpJvodNuoo4JIDcix48k0Snv5Na8NUw2Dz67a08DNzpMS+/rM
rA204wNGDPeg9AivRSY8dZQist6pLyvB6/QN3knPDa9SUS7QR4TAXkZRnWE+fYoO
ON2hr3FXVM6r/XknQzBAPDTx0X/1WcNoPMyJmESCSIakiAvJBYmW8kahx4j5EMNo
3afYnF1tNcyXksKjOKQ9zqBF3IMFpxmgNi3tpDZbRak7xUqPh+mb68L5VeYY60RE
qOp5rB+GVST0XPGILzG1/kRSa3XUOEwoX1uJSePjmTmAf0JjPZ4p8ZQ9qVyKRd9h
D5StvIVoXKKXDODJFXiZqhrAyhB7+LTrK08VJ6fD17B2YhhraXnWiHcxoFO5ms+t
Y8hUaItBsHj2kzSbtq9FabS6JPwMyMpU5EzzvIuah+jY2H0ih6/G7qRMzv2/rPcl
```

```
PlXGGHxFuE0QPW6VH76awMPcO2NPQWYNcdYqm0RZ6Rf8M+8LncG2k55/+RwDMD3X
i5LGTmZaDmhji2W5Mj1AxGEsVLRcrbs2P25HEmlhPcelnZgySP6ZljUoAq7NkH0F
oWlgCzubPdh0mUR0ZnCe55Lp1qW/MGOCceyYnoUDYyYFvGx5uyCqrDALcLCJqQ7Q
nNiLG7ICdLCarYwD25YLEIkNaKMBFkgIQS5ZnCLz1PLogn17r5HT+nildeZsZzPT
emNvTfpFO4UrCpsJZMNMCRGT1fihe9+7SH0dBdf826hBULjmTN5oEw==
-----END RSA PRIVATE KEY-----
```

```
/c/slb/ssl/certs/srvrcert 1
  name "PeopleSoft"
/c/slb/ssl/certs/import srvrcert "1" text
-----BEGIN CERTIFICATE-----
MIICuzCCAiSgAwIBAgIEUmPHpjANBgkqhkiG9w0BAQUFADAvMRMwEQYDVQQDEwpQ
ZW9wbGVtb2Z0MQswCQYDVQQGEwJlJDELMakGA1UECBMCSUwwHhcNMjMxMDIyMTMy
NDU5WhcNMjMxMDIyMTMyNDU5WjAvMRMwEQYDVQQDEwpQZW9wbGVtb2Z0MQswCQYD
VQQGEwJlJDELMakGA1UECBMCSUwwGz8wDQYJKoZIhvcNAQEBBQADgY0AMIGJAoGB
AMiE9KZxeUjJ2gSFq2syPhobvRwXS37AHatc+Mqb2v2bbAfx/ruqGY3vCQZwebg3
HROQHYZLA21LQ2qvo4cD3fhvfgiTCAGb+/T5j0Pk24aWZZWpCQ9Cu7GiequF75tx
gqRWyp0TG+aTmKcR7KprTvUMmm3aJbMDTtQzubl0TD6PAgMBAAGjgeMwgeAwDwYD
VR0TAAQH/BAUwAwEB/zARBglghkgBhvhCAQEEBAMCAkQwMgYJYIZIAyb4QgENBCUW
I0FsdGVvbi9Ob3J0ZWwgR2VuZXJhdGVkIENlcnRpZmljYXRlMB0GA1UdDgQWBTVd
di3VDV4EWyoTB4NA9S5NUBxmLzBaBgNVHSMEUzBRgBTVdi3VDV4EWyoTB4NA9S5N
UBxmL6EzpdEwLzETMBEGA1UEAxMKUGVvcGxlU29mdDELMAkGA1UEBhMCSUwxZAJ
BgNVBAGTAKlMggRSY8emMAsGA1UdDwQEAwIC5DANBgkqhkiG9w0BAQUFAAOBQQAC
opfxNJ8vZtpta70u/ItVzpv+cYpaHHVb9utGaKgw6xwN1bcEEQO+2/s/VFOrEoJ5
n0gmQrDqZRLU16MGgTHbXzN6vQ/ZLBpi3VgNZQtKzpNmMFAKr2j041aZDwyqRHxn
10JEzdBiB9VTYuYsHhha/CqIDJiy4I7lJoBDLjo1zw==
-----END CERTIFICATE-----
```

```
/c/slb/ssl
  on
/c/slb/ssl/sslpol 1
  name "PeopleSoft.SSL.Offloading"
  ena
```

Alteon Backup Configuration

Network Configuration

```
/c/port 1
  pvid 50
/c/l2/vlan 1
  learn ena
  def 0
/c/l2/vlan 50
  ena
  name "VLAN 50"
  learn ena
  def 1
/c/l2/stg 1/clear
/c/l2/stg 1/add 1 2 50
/c/l3/if 1
  ena
  ipver v4
  addr 192.168.30.3
  vlan 50
/c/l3/gw 1
  ena
  ipver v4
  addr 192.168.30.254
```

Sync Configuration

```
/c/slb/sync/passphrs
d3977bd7828203c3b2f6b69e7021b30035fba1b54d5e1e22d9b37f340780efd0

/c/slb/sync
  prios d
  pips e
  certs e
/c/slb/sync/peer 1
  ena
  addr 192.168.30.2
```

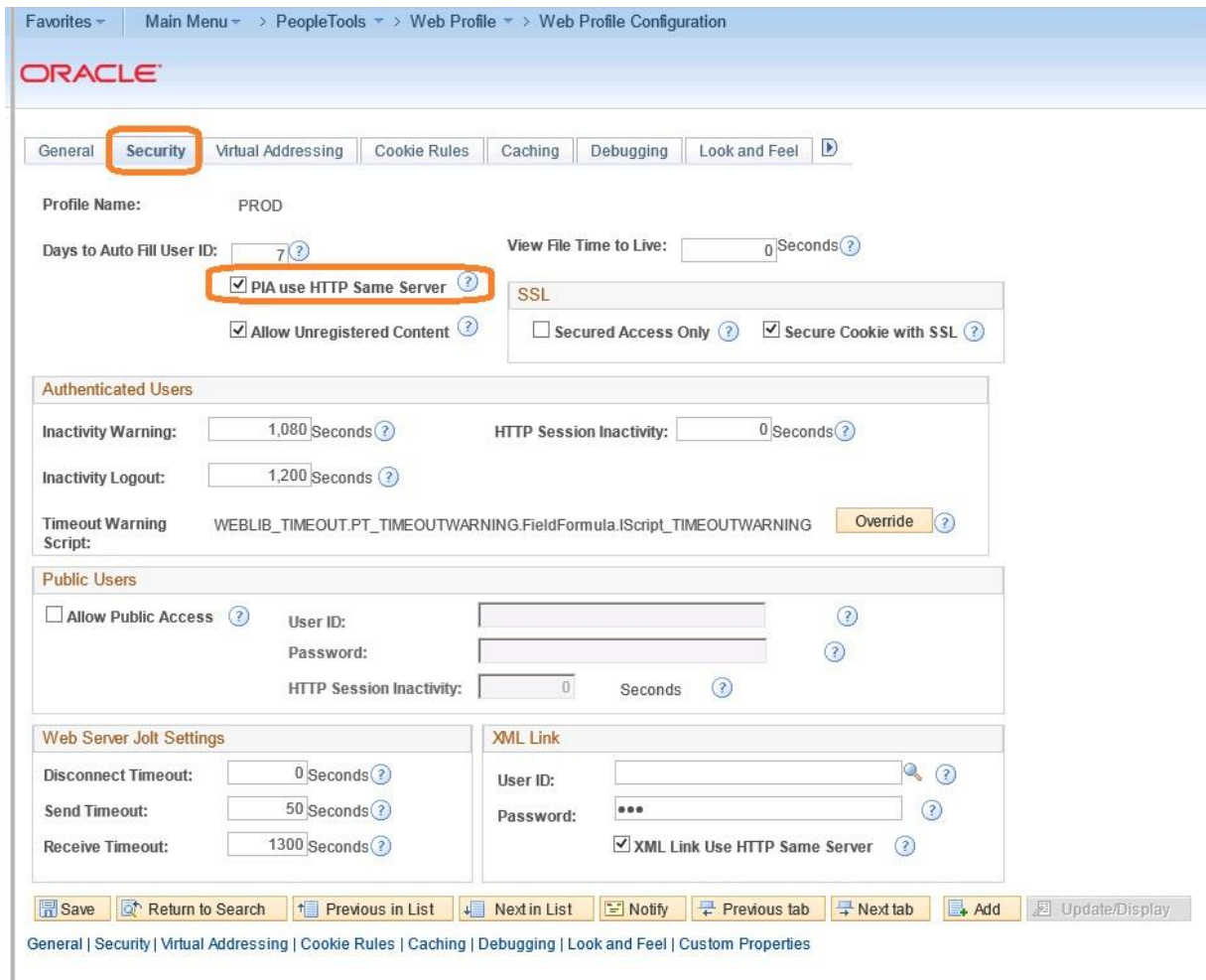
VRRP Configuration

```
/c/13/vrrp/on
/c/13/vrrp/vr 50
  ena
  ipver v4
  vrid 50
  if 1
  addr 192.168.30.1
/c/13/vrrp/vr 51
  ena
  ipver v4
  vrid 51
  if 1
  addr 192.168.30.200
/c/13/vrrp/vr 52
  ena
  ipver v4
  vrid 52
  if 1
  addr 192.168.30.201
```

Oracle PeopleSoft Configuration

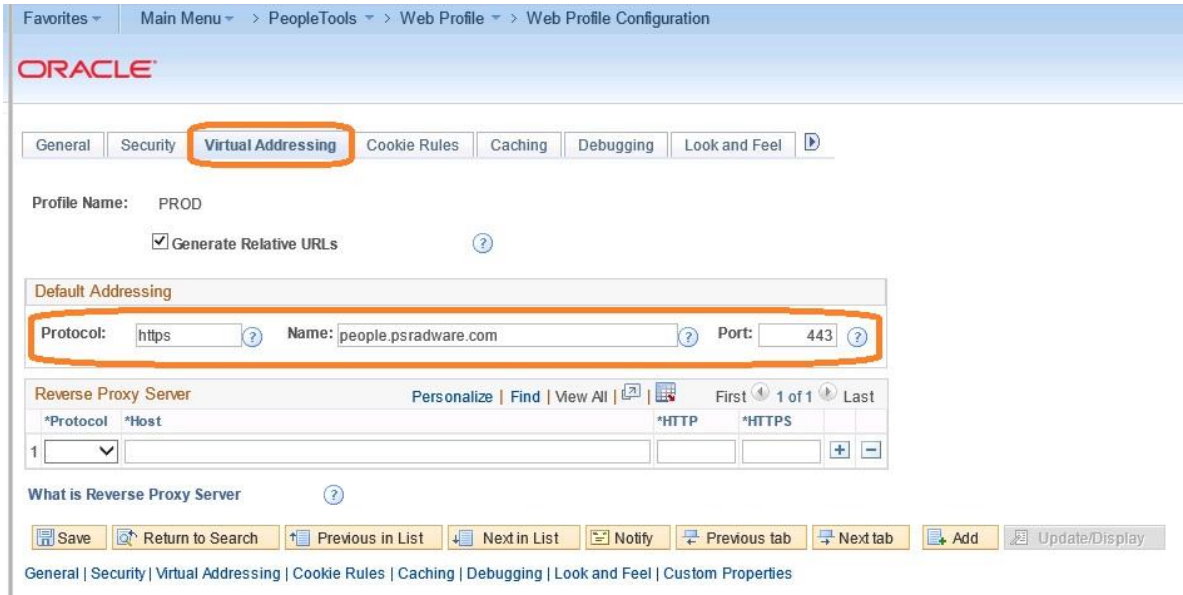
For PeopleSoft to work behind an Alteon platform, you need to make the following modifications on the PeopleSoft Web servers:

1. Log in to the PeopleSoft portal via the Web.
2. Navigate to **PeopleTools**.
3. Click **Web Profiles**.
4. Click **Search** to find the appropriate Web profile.
5. Select the Web profile that you want.
6. Go to the *Security* tab and enable **PIA use HTTP same Server**.



The screenshot shows the Oracle PeopleSoft Web Profile Configuration page, specifically the Security tab. The page title is "Web Profile Configuration" and the breadcrumb trail is "Main Menu > PeopleTools > Web Profile > Web Profile Configuration". The Oracle logo is visible at the top left. The Security tab is selected and highlighted with an orange box. Below the tabs, the Profile Name is "PROD". The "Days to Auto Fill User ID" is set to 7. The "View File Time to Live" is set to 0 seconds. The "PIA use HTTP Same Server" checkbox is checked and highlighted with an orange box. Other checked options include "Allow Unregistered Content" and "Secure Cookie with SSL". The "Authenticated Users" section includes "Inactivity Warning" (1,080 seconds), "Inactivity Logout" (1,200 seconds), and "HTTP Session Inactivity" (0 seconds). The "Public Users" section has "Allow Public Access" unchecked. The "Web Server Jolt Settings" section includes "Disconnect Timeout" (0 seconds), "Send Timeout" (50 seconds), and "Receive Timeout" (1300 seconds). The "XML Link" section has "XML Link Use HTTP Same Server" checked. At the bottom, there are navigation buttons: Save, Return to Search, Previous in List, Next in List, Notify, Previous tab, Next tab, Add, and Update/Display. A breadcrumb trail at the very bottom reads: "General | Security | Virtual Addressing | Cookie Rules | Caching | Debugging | Look and Feel | Custom Properties".

7. Go to the *Virtual Addressing* tab and set the following fields:
 - Protocol – **https**
 - Name – **people.psradware.com** (PeopleSoft domain name the points to the Alteon VIP)
 - Port – **443**



The screenshot shows the Oracle Web Profile Configuration interface. The 'Virtual Addressing' tab is selected and highlighted with an orange box. Below the tab, the 'Default Addressing' section is also highlighted with an orange box. It contains three input fields: 'Protocol' with the value 'https', 'Name' with the value 'people.psradware.com', and 'Port' with the value '443'. The 'Reverse Proxy Server' section is visible below, showing a table with columns for *Protocol, *Host, *HTTP, and *HTTPS. The bottom of the interface includes a navigation bar with buttons for Save, Return to Search, Previous in List, Next in List, Notify, Previous tab, Next tab, Add, and Update/Display.

8. Click **Save** at the bottom left of the pane.
9. Restart the **peoplesoft-PIA** service on all PeopleSoft Web servers.

Appendix A – Alteon Configuration Scripts

Alteon Active Configuration Script

```
/c/sys
  idle 600
/c/sys/access
  http ena
  tnet ena
/c/port 1
  pvid 50
/c/l2/vlan 1
  learn ena
  def 0
/c/l2/vlan 50
  ena
  name "50"
  learn ena
  def 1
/c/l2/vlan 50/ip6nd
  rlttime 183
  opinfo disabled
  apinfo disabled
/c/l2/stg 1/clear
/c/l2/stg 1/add 1 2 50
/c/sys/sshd/ena
/c/sys/sshd/on
/c/l3/if 1
  ena
  ipver v4
  addr 192.168.30.2
  vlan 50
/c/l3/gw 1
  ena
  ipver v4
  addr 192.168.30.254
```

```
/c/l3/vrrp/on
/c/l3/vrrp/vr 50
  ena
  ipver v4
  vrid 50
  if 1
  prio 250
  addr 192.168.30.1
/c/l3/vrrp/vr 51
  ena
  ipver v4
  vrid 51
  if 1
  prio 250
  addr 192.168.30.200
/c/l3/vrrp/vr 52
  ena
  ipver v4
  vrid 52
  if 1
  prio 250
  addr 192.168.30.201
/c/slb/accel/compress
  on
/c/slb/accel/compress/comppol 1
  name "PeopleSoft.Compression.pol"
  minsize 1
  ena
/c/slb/ssl/certs/key 1
/c/slb/ssl/certs/import key "1" text
-----BEGIN RSA PRIVATE KEY-----
Proc-Type: 4, ENCRYPTED
DEK-Info: DES-EDE3-CBC, 0E776612EA8D4A85

TI4jM6a1+LDiC1Nr7Ye7BkNcXfbs0kbluzh/Zv/qBJaIdzfAwL2DARdn1gwJlxxzB
mGfWCD95kw/K3kYfpJvodNuoo4JIDcix48k0Snv5Na8NUw2Dz67a08DNzpMS+/rM
```

```
rA2O4wNGDPeg9AivRSY8dZQisT6pLyvB6/QN3knPDa9SUS7QR4TAXkZRnWE+fYoO
ON2hr3FXVM6r/XknQzBAPDTx0X/1WcNoPMyJmESCSIakiAvJBYmW8kahx4j5EMNo
3afYnF1tNcyXksKjOKQ9zqBF3IMFpxmgNi3tpDZbRak7xUqPh+mb68L5VeYY60RE
qOp5rB+GVST0XPGILzG1/kRSa3XUOEwoX1uJSePjmTmAf0JjPZ4p8ZQ9qVyKRd9h
D5StvIVoXKKXDODJFXiZqhrAyhB7+LTrKO8VJ6fD17B2YhhraXnWiHcxoFO5ms+t
Y8hUaItBsHj2kzSbtq9FabS6JPwMyMpU5EzzvIuah+jY2H0ih6/G7qRMzv2/rPcl
PlXGGHxFuE0QPW6VH76awMPcO2NPQWYNcdYqm0RZ6Rf8M+8LncG2k55/+RWdMD3X
i5LGTmZaDmhji2W5Mj1AxGESVLRcrbs2P25HEmlhPcelnZgySP6ZljUoAq7NkH0F
oWlgCzubPdh0mUR0ZnCe55Lp1qW/MGOCceyYnoUDYyYFvGx5uyCqrDALcLCJqQ7Q
nNiLG7ICdLCarYwD25YLEIkNaKMBFkgIQS5ZnCLz1PLogn17r5HT+nildeZsZzPT
emNvTfPFO4UrCpsJZMNMCRGT1fihe9+7SH0dBdf826hBULjmTN5oEw==
-----END RSA PRIVATE KEY-----
```

```
/c/slb/ssl/certs/key WebManagementCert
/c/slb/ssl/certs/import key "WebManagementCert" text
-----BEGIN RSA PRIVATE KEY-----
Proc-Type: 4, ENCRYPTED
DEK-Info: DES-EDE3-CBC, E83E8E1D20ECC945
```

```
YowwYQAAMV83e3PkSp2Km8eWmHumfNBEwhzcrJrkY2XmMMYIPkrfZzzzyXUxxmoCW
RdMZhW6ZrAEaW0llq9KH7ZvYk7LaCaUvHs2ZCC8DbZ1+yrYYmu29S/tPtmCAVNoJ
611GUK3Ma+YjlMa3OJtx1LghHsgGNzy+DNThzx4pJFW9VYWlwtqBxNAoNr/MkN5s
v+vKHx87VsX1EMaQrjcf8Qgkoex8OBs45lGezV+XyONvvpawXdy9F50Cp9fY/Ike
rlWmpA7FhrRDs/3ZRiutlZP4BoWxVaJkuyo1cmWgptnplafJbxuq7Ajh4ZFv5EzR
VeccyqMf3D0BBkyTwMlfY6tL55LYgQZz3+m4ZtVrbdQdc4q73zu+vCgPilCgf/qb
uRuzFatU5grMYgU/EijT5Q1JjzvFKw/z7xWd5nQgz0+iyucxsdKwwBQxkD1Pb9mi
TC0Ht7Fj7/BlhP0GxwWhBATGkrZdwqhm+8wwS9oQ+PEqStbzLgBfecPHSkhv0KPD
F/zsh1MTwjh94kdyzXNfLc2fkdjKxDYQZJC+0KIgLoJgDcbuehe3QRmjPo7D2QPJ
KI6ljy7go833W+umK2uxVwx5qsApnGm4KI33/QxZRppJLVUVs20N1Hkic612KVOC
/mzb5wXejk7MQddwcnDZ7f7u/XkkelbAZ20tbfCDe++a/tkUn0h/GYgukSbiQjZE
nT7Mc4IEr54wMdUhjHLskUF768mh95NzWv1oV1TUUPJYYdb+r5N54Q0BtpVc4Zbx
oV53a8oKxbaT+V1+eIoJlM/YP9H4qpM/qdCnbAC9vfE=
-----END RSA PRIVATE KEY-----
```

```
/c/slb/ssl/certs/request 1
/c/slb/ssl/certs/import request "1" text
```

```
-----BEGIN CERTIFICATE REQUEST-----
MIIBbjCB2AIBADAvMRMwEQYDVQQDEwpQZW9wbGVtb2Z0MQswCQYDVQQGEwJTTDEL
MAkGA1UECBMCSUwwZ8wDQYJKoZIhvcNAQEBBQADgY0AMIGJAoGBAMie9KZxeUjJ
2gSFq2syPhobvRwXS37AHatc+Mqb2v2bbAfx/ruqGY3vCQZwebg3HROQHYZLA21L
Q2qvo4cD3fhvfgiTCAGb+/T5j0Pk24aWZZWPC9Cu7GiequF75txgqRWyp0TG+aT
mKcR7KprTvUMmm3aJbMDTtQzub10TD6PAgMBAAGgADANBgkqhkiG9w0BAQUFAAOB
gQCIN8+xbco4IML8jLxFlXmO+o5pSDEuzwjFXTVdcaE3D0YlJ+qq4aUB8KNPc9oL
LjxRXkwirzQPXD2hkPPUNvbsC6+wbRjQJvRBg/gHNE/ceMaQ1lHmMp/gdaCXQDL0
3G5yKpKdeV26P91kqWQOop/lcPB8tJp82CHvjQa6UQYC3w==
-----END CERTIFICATE REQUEST-----
```

```
/c/slb/ssl/certs/request WebManagementCert
/c/slb/ssl/certs/import request "WebManagementCert" text
```

```
-----BEGIN CERTIFICATE REQUEST-----
MIIBazCB1QIBADAsMSowKAYDVQQDFCFEZWZhdWx0X0dlbmVyYXRlZGF9BbHRlb25f
QkJJX0NlcnQwgZ8wDQYJKoZIhvcNAQEBBQADgY0AMIGJAoGBAJ/Ehn0J8lR8bnlk
ZH39yOXvJukcg1eeG/TMLRpLxR2i96Zc/L/Rn7jhrSYHsTuDkCWQpYQjH/7eWapL
IIOTrgtPiQWxmYA7EQbWM4mPtT9e9mNGYZEzdh3RF7m12nNlRtpvDXroxcmFK/Ik
h82CoOglVhL3NjW7xAg18aehVb33AgMBAAGgADANBgkqhkiG9w0BAQQFAAOBQBY
V0194hJstayhAJWVGHSOIsAr8M5OhKRONPD+Tune/TFv07uZJPORuj1T8uV+BVEU
8xT0/yBDLegE+7t2PDqfy1PNtdwB3+rJ2wWWAAK7+YP9F4gftkf66cAiQZQVpPi6
rgW2pFfOcd3q9ZWR6zdQD4XwRxBgs+McTOdZ6o8MDw==
-----END CERTIFICATE REQUEST-----
```

```
/c/slb/ssl/certs/srvrcert 1
name "PeopleSoft"
/c/slb/ssl/certs/import srvrcert "1" text
```

```
-----BEGIN CERTIFICATE-----
MIICuzCCAiSgAwIBAgIEUmPHpjANBgkqhkiG9w0BAQUFADAvMRMwEQYDVQQDEwpQ
ZW9wbGVtb2Z0MQswCQYDVQQGEwJTTDELMAkGA1UECBMCSUwwHhcNMjMxMDIyMTMy
NDU5WhcNMjMxMDIyMTMyNDU5WjAvMRMwEQYDVQQDEwpQZW9wbGVtb2Z0MQswCQYD
VQQGEwJTTDELMAkGA1UECBMCSUwwZ8wDQYJKoZIhvcNAQEBBQADgY0AMIGJAoGB
AMie9KZxeUjJ2gSFq2syPhobvRwXS37AHatc+Mqb2v2bbAfx/ruqGY3vCQZwebg3
HROQHYZLA21LQ2qvo4cD3fhvfgiTCAGb+/T5j0Pk24aWZZWPC9Cu7GiequF75tx
gqRWyp0TG+aTmKcR7KprTvUMmm3aJbMDTtQzub10TD6PAgMBAAGjgeMwgeAwDwYD
VR0TAQH/BAUwAwEB/zARBglghkgBhvhCAQEEBAMCAkQwMgYJYIZIAyb4QgENBCUW
```

```
I0FsdGVvbi9Ob3J0ZWwgR2VuZXJhdGVkIENlcnRpZmljYXRlMB0GA1UdDgQWBbTV
di3VDV4EWyoTB4NA9S5NUBxmLzBaBgNVHSMEUzBRgBTVDi3VDV4EWyoTB4NA9S5N
UBxmL6EzpdEwLzETMBEGA1UEAxMKUGVvcGxlU29mdDELMAkGA1UEBhmCSUwxCzAJ
BgNVBAGTAKlMggRSY8emMAsGA1UdDwQEAwIC5DANBgkqhkiG9w0BAQUFAAOBgQAC
opfxNJ8vZtpta70u/ItVzpv+cYpaHHVb9utGaKgw6xwN1bcEEQO+2/s/VFOrEoJ5
n0gmQrDqZRLU16MGTHbXzN6vQ/ZLBpi3VgNZQtKzpNmMFaKr2j041aZDwyqRHxn
10JEzdBiB9VTYuYsHhA/CqIDJiy4I7lJoBDLj01zw==
-----END CERTIFICATE-----
```

```
/c/slb/ssl/certs/srvrcert WebManagementCert
/c/slb/ssl/certs/import srvrcert "WebManagementCert" text
-----BEGIN CERTIFICATE-----
MIICsjCAhugAwIBAgIEUmPHpTANBgkqhkiG9w0BAQQFADAsMSowKAYDVQQDFCFE
ZWZhdWx0X0dlbmVvYXNlZm9udG9uZm9udG9uZm9udG9uZm9udG9uZm9udG9uZm9u
WhcNMTQxMDEwMTIwODAxWjAsMSowKAYDVQQDFCFEZWZhdWx0X0dlbmVvYXNlZm9u
bHRlb25fQkJKX0NlcnQwgZ8wDQYJKoZIhvcNAQEBBQADgY0AMIGJAoGBAJ/Ehn0J
81R8bnlkZH39yOXvJukcg1eeG/TMlRpLxR2i96Zc/L/Rn7jhrSYHsTuDkCWQpYQj
H/7eWapLIIOTrgtPiQWxmYA7EQbWM4mPtT9e9mNGYZEzdh3RF7m12nNlRtpvDXro
xcmFK/Ikh82CoOglVhL3NjW7xAg18aehVb33AgMBAAGjgeAwgd0wDwYDVR0TAQH/
BAUwAwEB/zARBglghkgBhvhCAQEEBAMCAkQwMgYJYIZIAyB4QgENBCUWI0FsdGVv
bi9Ob3J0ZWwgR2VuZXJhdGVkIENlcnRpZmljYXRlMB0GA1UdDgQWBbTouUamk3oli
kIYTz66N8THH/DxF1jBxBgNVHSMEUDBOgBTOUamk3olikIYTz66N8THH/DxF1qEw
pC4wLDEqMCGA1UEAxQhRGVmYXVsdF9HZW51cmF0ZW9uX0JCSV9DZXJ0
ggRSY8elMAsGA1UdDwQEAwIC5DANBgkqhkiG9w0BAQQFAAOBgQBirPyjcx/jrABC
vftd2mj3noDJWlIXgnuQAlBXj7X/g/80PUvwvQX5Y7u8kkfLpJbSDdUzYoExDZb1
jUfHU1v3hx1Nf1N4V04ttgLuSoDWq08K0V7DDg82Gyw/P64UVNI50J2hwvWaXIhj
7RmtPiXvP66oxf8rfJ2CXfUsFlrICw==
-----END CERTIFICATE-----
```

```
/c/slb/sync/passphrs
bbf4cd34aaa0cd20f2b7a6fd58037de3beb4b09ff6eb44379271e3fe60c75b57
/c/slb/ssl
on
/c/slb/ssl/sslpol 1
name "PeopleSoft.SSL.Offloading"
ena
```

```
/c/slb
  on
/c/slb/adv
  direct ena
/c/slb/sync
  prios d
  pips e
  certs e
/c/slb/sync/peer 1
  ena
  addr 192.168.30.3
/c/slb/real 1
  ena
  ipver v4
  rip 192.168.30.21
  name "PeopleSoft.Server.1"
/c/slb/real 2
  ena
  ipver v4
  rip 192.168.30.22
  name "PeopleSoft.Server.2"
/c/slb/group 1
  ipver v4
  metric roundrobin
  add 1
  add 2
  name "PeopleSoft.Group"
/c/slb/port 1
  client ena
  server ena
  proxy ena
/c/slb/virt 1
  ena
  ipver v4
  vip 192.168.30.200
  vname "PeopleSoft.VIP"
```

```
/c/slb/virt 1/service 443 https
  group 1
  rport 9080
  dbind forceproxy
/c/slb/virt 1/service 443 https/http
  compol 1

/c/slb/virt 1/service 443 https/ssl
  srvcert cert 1
  sslpol 1
/c/slb/virt 1/service 443 https/pip
  mode address
  addr v4 192.168.30.201 255.255.255.255 persist disable
/c/slb/real 1/layer7
  addlb 1
/c/slb/real 2/layer7
  addlb 1
/c/slb/virt 1/service 443 https/pbind cookie passive "PSJSESSIONID" 1
64 disable
/c/slb/virt 1/service 443 https/http/rcount 1
/c/sys/access/https/cert WebManagementCert
/c/sys/access/https/https e
/
script end /**** DO NOT EDIT THIS LINE!
```

Alteon Backup Configuration Script

```
/c/sys/access
  http ena
  tnet ena
/c/port 1
  pvid 50
/c/l2/vlan 1
  learn ena
  def 0
/c/l2/vlan 50
  ena
```

```
name "VLAN 50"
learn ena
def 1
/c/12/stg 1/clear
/c/12/stg 1/add 1 2 50
/c/sys/sshd/ena
/c/sys/sshd/on
/c/13/if 1
  ena
  ipver v4
  addr 192.168.30.3
  vlan 50
/c/13/gw 1
  ena
  ipver v4
  addr 192.168.30.254
/c/13/vrrp/on
/c/13/vrrp/vr 50
  ena
  ipver v4
  vrid 50
  if 1
  addr 192.168.30.1
/c/13/vrrp/vr 51
  ena
  ipver v4
  vrid 51
  if 1
  addr 192.168.30.200
/c/13/vrrp/vr 52
  ena
  ipver v4
  vrid 52
  if 1
  addr 192.168.30.201
/c/slb/accel/compress
```



```
on
/c/slb/accel/compress/comppol 1
  name "PeopleSoft.Compression.pol"
  minsize 1
  ena
/c/slb/ssl/certs/key 1
/c/slb/ssl/certs/import key "1" text
-----BEGIN RSA PRIVATE KEY-----
Proc-Type: 4,ENCRYPTED
DEK-Info: DES-EDE3-CBC,C93BDAC96BDDF7E3

zuhpxYIgbwrUwa6/sYv238XUTmdKL+3b+fJnn1eTVwm157XvtbzPCWtaVvltK70m
oqaBWRyREDAy0Wpt8xLZa60BUEUfqoRZtwAQpKeWftmuiYZCTdbG8FkGYN7MfNX
8cDhRmgfn2L3mE/efbxpmE9VmsSq36z5U1P4ykf/LXNHp/N/Lc2zvEJgOkP3BekP
cnI7sjPmZKQWksUWexdhgOK1zo3Y+czAyQCzek7gsSmugh2sOlmUQNdgdd8AaESy
C1QygsCb2isYrYW4kqmHG1ZdMA8ghxeM2dDT0kj8NdMnwR+yIaviPp3uJeJWkcDA
3MX9qfVL/3WFuPcdlbz/pYVJ5dwkQb6Vn4U5QvAOfa2UGNdmgW8/1a7WQOXsLy3+
hy7vIVp67i/3WbpaiHQjo06TYWYB8/5ZUxdsZcPlWU0twolexyRrLui55f3z/Ili
LsbWqVfSL9K3bE8VDuBAzSGJKbaIn7uzp0n4673diIsx0w9Li7oxk8lKHYjv67S4
7lGXuxvZBEblaGWV7k7xfSntJs5Dh2+LWAJcen0OtbV7BquWYR8zogbtg3wapqdJ6
yPNArWMvWskGe0x91a4+yQOyKzrwGCYDevPDSXNorj78VQ8MYpHbPRVc6mXochQX
AzIyE82ZCas6WExyAvG3COcphxPit+/c6x4n7WNjM5OfEpBPv2m8XKkTL91KrAwf
ORgJZke8TtAppD++9+hJhsRSZVZwNTN/kQ+y7fY4tP09v0jp0qG0ZmfMjMeHRnvb
qjxa6qz8/5ZFKLibRGPM3yv81P5BSVITkZVN6RNiUHsKtFibBJL11A==
-----END RSA PRIVATE KEY-----

/c/slb/ssl/certs/key WebManagementCert
/c/slb/ssl/certs/import key "WebManagementCert" text
-----BEGIN RSA PRIVATE KEY-----
Proc-Type: 4,ENCRYPTED
DEK-Info: DES-EDE3-CBC,BF6C89D03B56A606

eU1mFlXx03EmOXEZKunpH5xLcqZUetbyqWBDg517kOe1B2kq5UQwxdbx+CbmajXy
Yg70VROLyMG8TeCDe1592QkkuTGHZvaT7I/88VbFX/YkrU92yuDM5C/3fKFXyv7n
dEES67AbdTKESiHEFyRoSioZYKEXmsmtP1lp+/0Kx0akW9RHYZR5Txd4+L94dgD4
ZZhLm5tQJlQ/z2+YzYJWfC5WU/6pCn+2kaU14ME/x+d3Fah++SrU00jLM7N2u/pv
```

```
I2UjpCHopgCQFfgOQdDoUCAqDYRjBfV+ddghsRbTNntKoLCnmaiclj//ql+inKhI
jJQPSTAujpujNAOFJK4K1oQPm0Y5mtYlkiTQtaa6mqyTNlk+syKn8aDvLyiLhQpi
YgV521LRVuq9qLvNjvSpdDjrr9NmgLf6DZO5ldS6Z9SukEhgg0gCeNKOWpXe2Jv3
fhuSSdGDg/sv8azeL/Qw9A2vcQXjuZFWFcanaYD8e/i14Y6TNQ270XEnHI+hxHuh
4+vFK42wAGThFNdmCpvhEa8mkyn9dc5JmQzFK1tywgqRSRnsgMQcayjWJMkO4Jqb
vWvtAPbgHU73COTRoBxPsDVONUnY69t3SOIQsvwwD0denzn/IJdXMMJceQ9ylFnC
MYf6G6bnaQoktCvgiMSf55oFxmMEEjAqYqgmAe4rsDSW3Z7XeJTxKfR88HTFLAO
a0S1OVVpQAu2cZWLe/n8gwSkzFLYrYcKzbHu/c66WN08IDNr1aKzWOkjICr7PhmP
fp0pKX31jnkPqZJuqcQe/35yYiVdZeMO3to3yXKsRFA=
-----END RSA PRIVATE KEY-----
```

```
/c/slb/ssl/certs/request 1
/c/slb/ssl/certs/import request "1" text
-----BEGIN CERTIFICATE REQUEST-----
MIIBbjCB2AIBADAvMRMwEQYDVQQDEWpQZW9wbGVtb2Z0MQswCQYDVQQGEWJTTDEL
MAkGA1UECBMCSUwwZ8wDQYJKoZIhvcNAQEBBQADgY0AMIGJAoGBAMIE9KZxeUjJ
2gSFq2syPhobvRwXS37AHatc+Mqb2v2bbAfx/ruqGY3vCQZwebg3HROQHYzLA21L
Q2qvo4cD3fhvfgiTCAGb+/T5j0Pk24aWZZWPCQ9Cu7GiequF75txgqRWyp0TG+aT
mKcR7KprTvUmm3aJbMDTtQzubl0TD6PAgMBAAGgADANBgkqhkiG9w0BAQUFAAOB
gQCIN8+xbco4IML8jLxFlXmO+o5pSDEuzwjFXTVdcaE3D0YlJ+qq4aUB8KNPc9oL
LjxRXkwirzQPXD2hkPPUNvbsC6+wbRjQJvRBg/gHNE/ceMaQ1lHmMp/gdaCXQDL0
3G5yKpKdeV26P91kqWQOop/lcPB8tJp82CHvjQa6UQYC3w==
-----END CERTIFICATE REQUEST-----
```

```
/c/slb/ssl/certs/request WebManagementCert
/c/slb/ssl/certs/import request "WebManagementCert" text
-----BEGIN CERTIFICATE REQUEST-----
MIIBazCB1QIBADAsMSowKAYDVQDFCFEZWZhdWx0X0dlbmVyYXRlZlZ9BbHR1b25f
QkJJX0NlcnQwgZ8wDQYJKoZIhvcNAQEBBQADgY0AMIGJAoGBAJ/Ehn0J8lR8bnlk
ZH39yOXvJukcg1eeG/TMlRpLxR2i96Zc/L/Rn7jhrSYHsTuDkCWQpYQjH/7eWapL
IIOTrgtPiQWxmYA7EQbWM4mPtT9e9mNGYZEzdh3RF7m12nNlRtpvDXroxcmFK/Ik
h82CoOglVhL3NjW7xAgl8aehVb33AgMBAAGgADANBgkqhkiG9w0BAQQFAAOBgQBY
V0194hJStayhAJWVGHSOIsAr8M5OhKRONPD+Tune/TFv07uZJPOruj1T8uV+BVEU
8xT0/yBDLegE+7t2PDqfy1PNtdwB3+rJ2wWAAK7+YP9F4gftkf66cAiQZQVpPi6
rgW2pFfOcD3q9ZWR6zdQD4XwRxBgs+McTOdZ6o8MDw==
-----END CERTIFICATE REQUEST-----
```

```
/c/slb/ssl/certs/srvrcert 1
  name "PeopleSoft"
/c/slb/ssl/certs/import srvrcert "1" text
-----BEGIN CERTIFICATE-----
MIICuzCCAiSgAwIBAgIEUmPHpjANBqkqhkiG9w0BAQUFADAvMRMwEQYDVQQDEWpQ
ZW9wbGVtb2Z0MQswCQYDVQQGEWJTTDELMAkGA1UECBMSUwwHhcNMTMxMDIyMTMy
NDU5WhcNMjMxMDIwMTMyNDU5WjAvMRMwEQYDVQQDEWpQZW9wbGVtb2Z0MQswCQYD
VQQGEWJTTDELMAkGA1UECBMSUwwgZ8wDQYJKoZIhvcNAQEBBQADgY0AMIGJAoGB
AMIE9KZxeUjJ2gSFq2syPhobvRwXS37AHatc+Mqb2v2bbAfx/ruqGY3vCQZwebg3
HROQHYZLA21LQ2qvo4cD3fhvfgiTCAGb+/T5j0Pk24aWZZWPcQ9Cu7GiequF75tx
gqRWyp0TG+aTmKcR7KprTvUMmm3aJbMDTtQzubl0TD6PAgMBAAGjgeMwgeAwDwYD
VR0TAQH/BAUwAwEB/zARBglghkgBhvhCAQEEBAMCAkQwMgYJYIZIAyb4QgENBCUW
I0FsdGVvbi9Ob3J0ZWwgR2VuZXJhdGVkIENlcnRpZmljYXRlMB0GA1UdDgQWBbTV
di3VDV4EWyoTB4NA9S5NUBxmLzBaBgNVHSMEUzBRgBTVDi3VDV4EWyoTB4NA9S5N
UBxmL6EzpdEwLzETMBEGA1UEAxMKUGVvcGxlU29mdDELMAkGA1UEBhMCSUwxCzAJ
BgNVBAGTAKlMggRSY8emMAsGA1UdDwQEAwIC5DANBgkqhkiG9w0BAQUFAAOBQAC
opfxNJ8vZtpta70u/ItVzpv+cYpaHHVb9utGaKgw6xwN1bcEEQO+2/s/VFOrEoJ5
n0gmQrDqZRLU16MGGTHbXzN6vQ/ZLbpi3VgNZQtKzpNmMFaKr2j041aZDwyqRHxn
10JEzdBiB9VTYuYsHhA/CqIDJiy4I71JoBDLjo1zw==
-----END CERTIFICATE-----
```

```
/c/slb/ssl/certs/srvrcert WebManagementCert
/c/slb/ssl/certs/import srvrcert "WebManagementCert" text
-----BEGIN CERTIFICATE-----
MIICsjCCAhugAwIBAgIEUmPHpTANBqkqhkiG9w0BAQQFADAsMSowKAYDVQQDFCFE
ZWZhdWx0X0dlbmVYXRlZlZ9BbHRlb25fQkJJX0NlcnQwHhcNMTMxMDIwMTIwODA1
WhcNMTQxMDIwMTIwODA1WjAsMSowKAYDVQQDFCFEZWZhdWx0X0dlbmVYXRlZlZ9B
bHRlb25fQkJJX0NlcnQwgZ8wDQYJKoZIhvcNAQEBBQADgY0AMIGJAoGBAJ/Ehn0J
81R8bnlkZH39yOXvJukcg1eeG/TmlRpLxR2i96Zc/L/Rn7jhrSYHsTuDkCWQpYQj
H/7eWapLIIOTrgtPiQWxmYA7EQbWM4mPtT9e9mNGYZEzdh3RF7m12nN1RtpvDXro
xcmFK/Ikh82CoOglVhL3NjW7xAg18aehVb33AgMBAAGjgeAwgd0wDwYDVR0TAQH/
BAUwAwEB/zARBglghkgBhvhCAQEEBAMCAkQwMgYJYIZIAyb4QgENBCUWI0FsdGVv
bi9Ob3J0ZWwgR2VuZXJhdGVkIENlcnRpZmljYXRlMB0GA1UdDgQWBbTVdi3VDV4
EWyoTB4NA9S5NUBxmLzBaBgNVHSMEUDB0gBT0Uamk3olikIYTz66N8THH/DxF1qEw
pC4wLDEqMCgGA1UEAxQhRGVmYXVsdF9HZW5lcmF0ZW9uX0JCSV9DZXJ0
```

```
ggRSY8e1MAsGA1UdDwQEAWIC5DANBkgqhkiG9w0BAQQFAAQBgQBirPyjcX/jrABC
vftd2mj3noDJWlIXgnuQAlBXj7X/g/80PUvwwQX5Y7u8kkfLpJbSSdUzYOeXdZb1
jUfHU1v3hx1Nf1N4V04ttgLuSoDWq08K0V7DDg82Gyw/P64UVNI50J2hwwWaXIhj
7RmtPiXvP66oxf8rfJ2CXfUsFlrICw==
-----END CERTIFICATE-----
```

```
/c/slb/sync/passphrs
d3977bd7828203c3b2f6b69e7021b30035fba1b54d5e1e22d9b37f340780efd0
/c/slb/ssl
  on
/c/slb/ssl/sslpol 1
  name "PeopleSoft.SSL.Offloading"
  ena
/c/slb
  on
/c/slb/adv
  direct ena
/c/slb/sync
  prios d
  pips e
  certs e
/c/slb/sync/peer 1
  ena
  addr 192.168.30.2
/c/slb/real 1
  ena
  ipver v4
  rip 192.168.30.21
  name "PeopleSoft.Server.1"
/c/slb/real 2
  ena
  ipver v4
  rip 192.168.30.22
  name "PeopleSoft.Server.2"
/c/slb/group 1
  ipver v4
```

```
metric roundrobin
add 1
add 2
name "PeopleSoft.Group"
/c/slb/port 1
client ena
server ena
proxy ena
/c/slb/virt 1
ena
ipver v4
vip 192.168.30.200
vname "PeopleSoft.VIP"
/c/slb/virt 1/service 443 https
group 1
rport 9080
dbind forceproxy
/c/slb/virt 1/service 443 https/http
comppol 1
/c/slb/virt 1/service 443 https/ssl
svrcert cert 1
sslpol 1
/c/slb/virt 1/service 443 https/pip
mode address
addr v4 192.168.30.201 255.255.255.255 persist disable
/c/slb/real 1/layer7
addlb 1
/c/slb/real 2/layer7
addlb 1
/c/slb/virt 1/service 443 https/pbind cookie passive "PSJSESSIONID" 1
64 disable
/c/slb/virt 1/service 443 https/http/rcount 1
/c/sys/access/https/cert WebManagementCert
/c/sys/access/https/https e
/
script end /**** DO NOT EDIT THIS LINE!
```

North America

Radware Inc.

575 Corporate Drive

Mahwah, NJ 07430

Tel: +1-888-234-5763

International

Radware Ltd.

22 Raoul Wallenberg St.

Tel Aviv 69710, Israel

Tel: 972 3 766 8666

© 2013 Radware, Ltd. All Rights Reserved. Radware and all other Radware product and service names are registered trademarks of Radware in the U.S. and other countries. All other trademarks and names are the property of their respective owners. Printed in the U.S.A